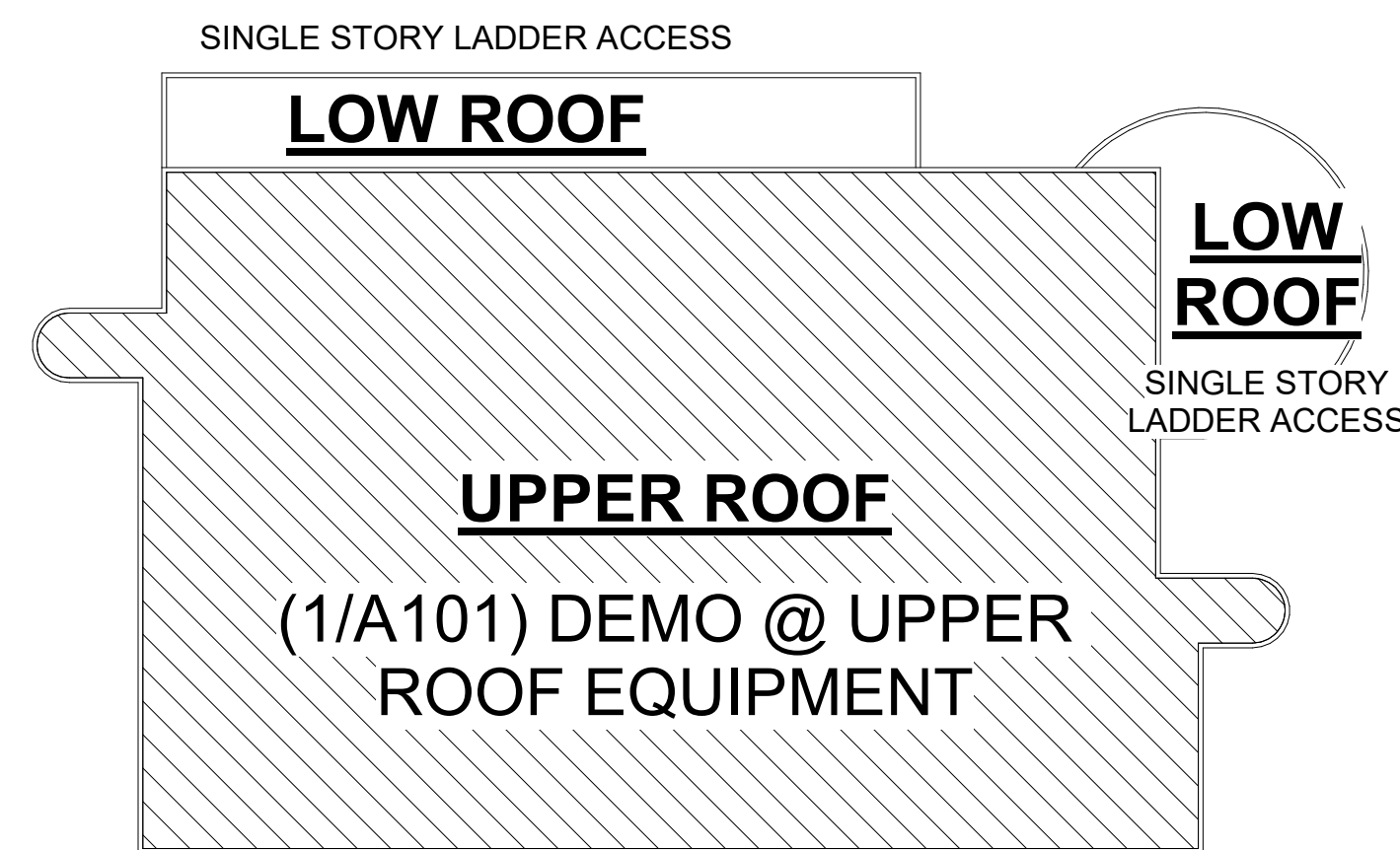


1 DEMO @ UPPER ROOF PLAN
 A101 3/32" = 1'-0"

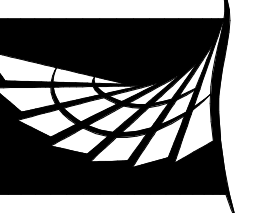


ROOF LOCATOR MAP
 NOT TO SCALE

GENERAL DEMO NOTES

- DEBRIS CONTROL** - PROVIDE CONTINUOUS BUILDING PERIMETER DEBRIS BARRIER FOR DURATION OF PROJECT. CONTRACTOR TO PROPOSE, PROVIDE, AND INSTALL NETTING OR SIMILAR DEBRIS BARRIER SOLUTION TO BE NO LESS THAN 4'-0" HIGH AROUND THE FULL BUILDING PERIMETER. SOLUTION MUST INCLUDE STRATEGY FOR WORKING AROUND THE NETTING AND SUPPORTS AT PERIMETER CONDITIONS AND REMOVAL OF BARRIER AND ASSOCIATED SUPPORTS UPON COMPLETION OF THE PROJECT INCLUDING TOUCH-UP AND REPAIR OF ANY AFFECTED AREAS.

General Keynotes	
Key Value	Keynote Text
01	EXISTING ROOF DRAIN SELECTIVE DEMO - SEE DETAIL 1/A201
02	EXISTING ROOF OVERFLOW SCUPPER SELECTIVE DEMO - SEE SHEET A203
03	DEMO ENTIRE METAL PARAPET COPING CAP ASSEMBLY
04	EXISTING TO REMAIN
06	DEMO EXISTING ENTIRELY & PREPARE FOR REPAIR OF ROOF OPENING
07	DEMO ENTIRE EXHAUST FAN & DUCT ASSEMBLY IN ENTIRETY DOWN TO POINT BELOW ROOF DECK. PREPARE FOR REPAIR OF OPENINGS IN ROOF DECK & ROOF SYSTEM



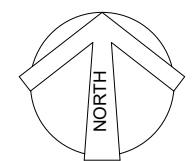
11/08/2024

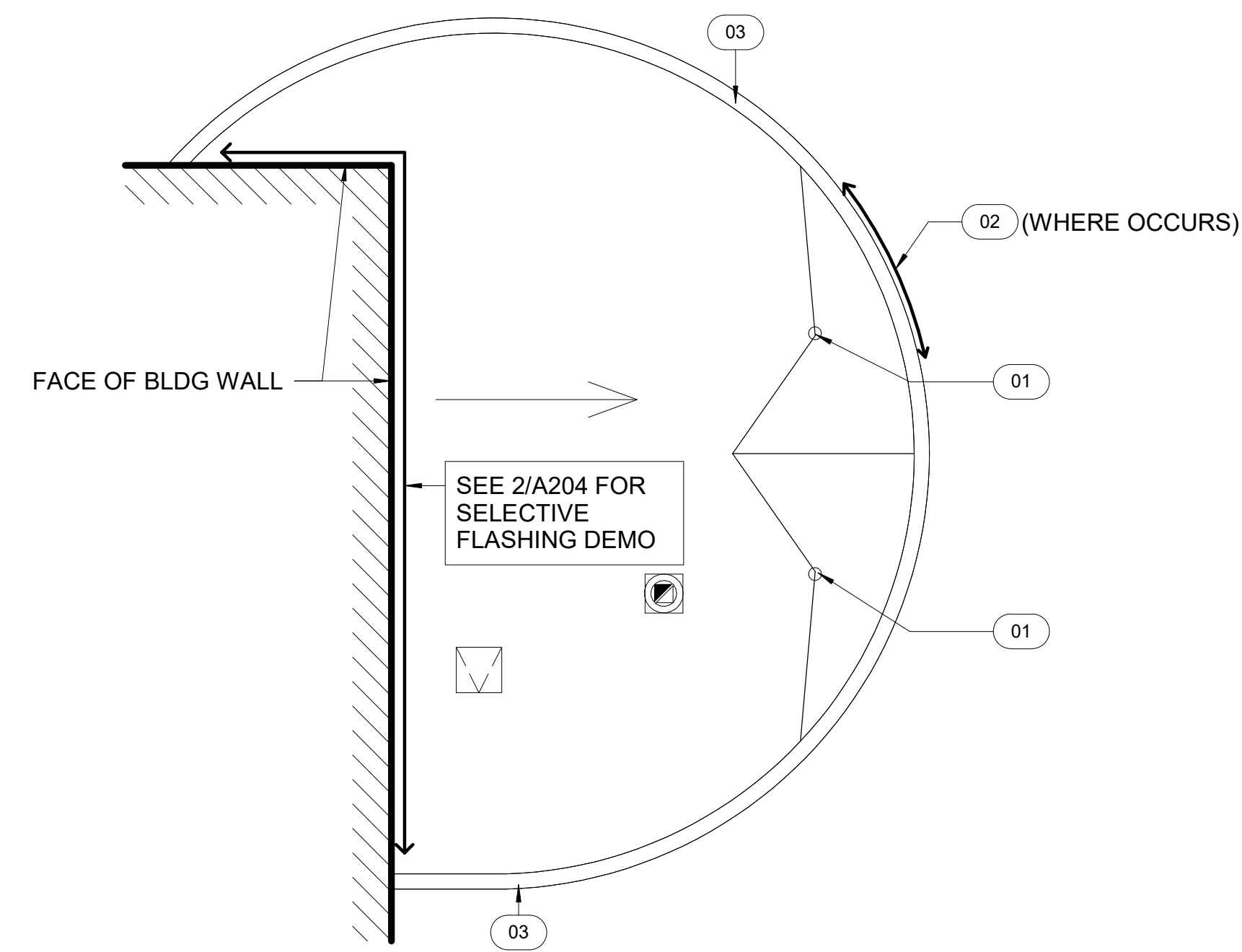
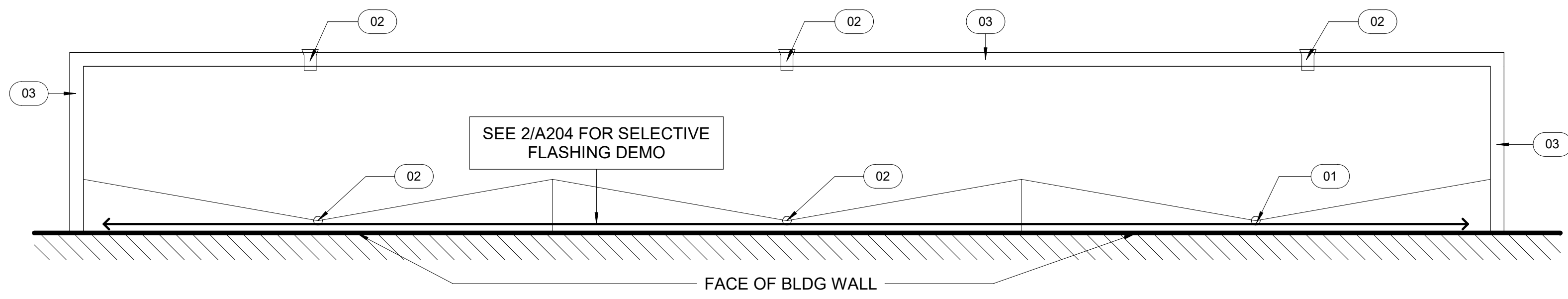
NRC RE-ROOF OVERLAY
TEXAS A&M UNIVERSITY CORPUS CHRISTI - 100% REVIEW
UPPER ROOF DEMOLITION PLAN

REVISIONS:

DATE: 11/08/2024

A101

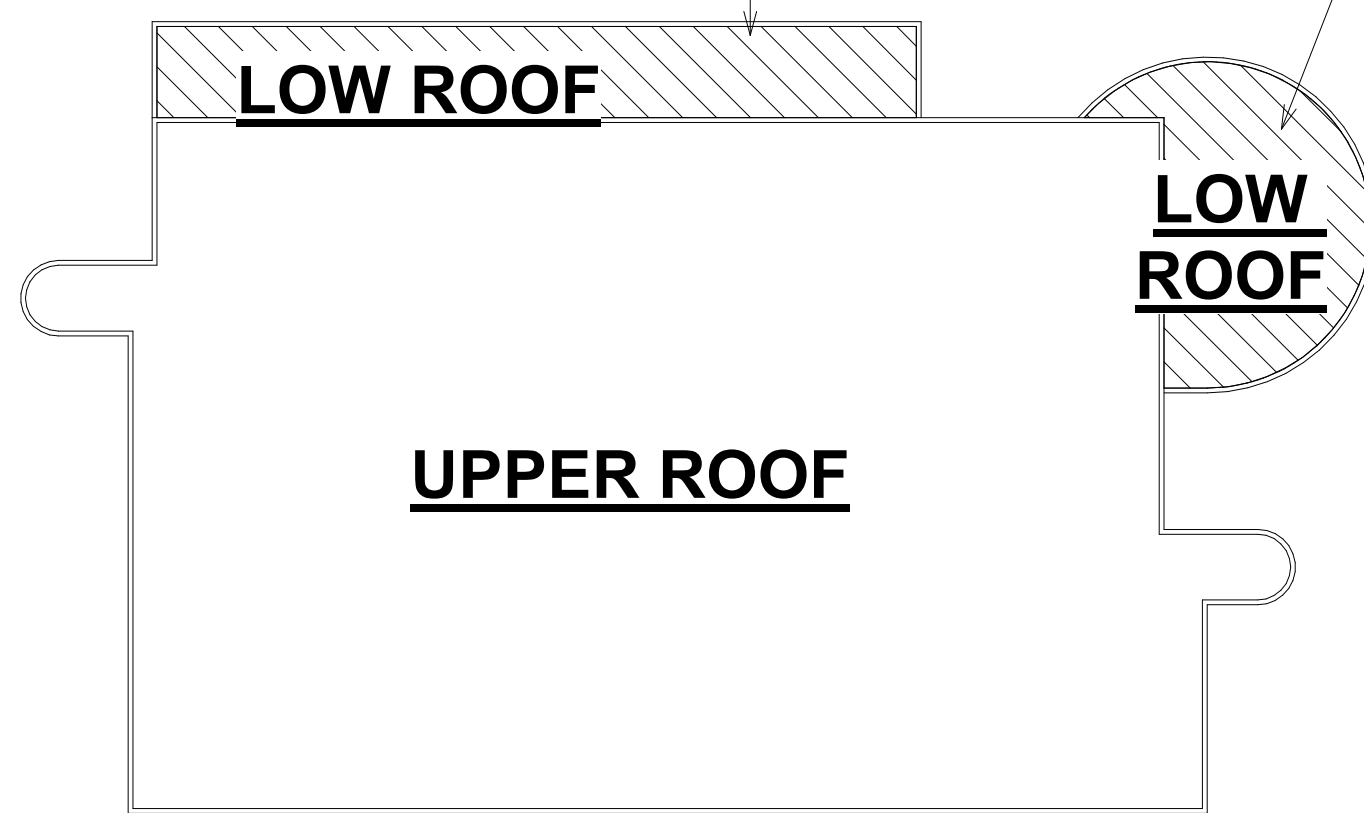




1 DEMO @ LOW ROOF (A)
A102 3/32" = 1'-0"
0' 8' 16' 32'

2 DEMO @ LOW ROOF (B)
A102 3/32" = 1'-0"
0' 8' 16' 32'

(1/A102) DEMO @ LOW ROOF (A) (2/A102) DEMO @ LOW ROOF (B)



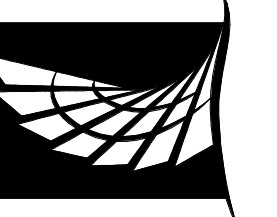
DEMOS - ROOF LOCATOR MAP
NOT TO SCALE

GENERAL DEMO NOTES

- DEBRIS CONTROL** - PROVIDE CONTINUOUS BUILDING PERIMETER DEBRIS BARRIER FOR DURATION OF PROJECT. CONTRACTOR TO PROPOSE, PROVIDE, AND INSTALL NETTING OR SIMILAR DEBRIS BARRIER SOLUTION TO BE NO LESS THAN 4'-0" HIGH AROUND THE FULL BUILDING PERIMETER. SOLUTION MUST INCLUDE STRATEGY FOR WORKING AROUND THE NETTING AND SUPPORTS AT PERIMETER CONDITIONS AND REMOVAL OF BARRIER AND ASSOCIATED SUPPORTS UPON COMPLETION OF THE PROJECT INCLUDING TOUCH-UP AND REPAIR OF ANY AFFECTED AREAS.

General Keynotes

Key Value	Keynote Text
01	EXISTING ROOF DRAIN SELECTIVE DEMO - SEE DETAIL 1/A201
02	EXISTING ROOF OVERFLOW SCUPPER SELECTIVE DEMO - SEE SHEET A203
03	DEMO ENTIRE METAL PARAPET COPING CAP ASSEMBLY



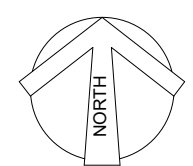
11/08/2024

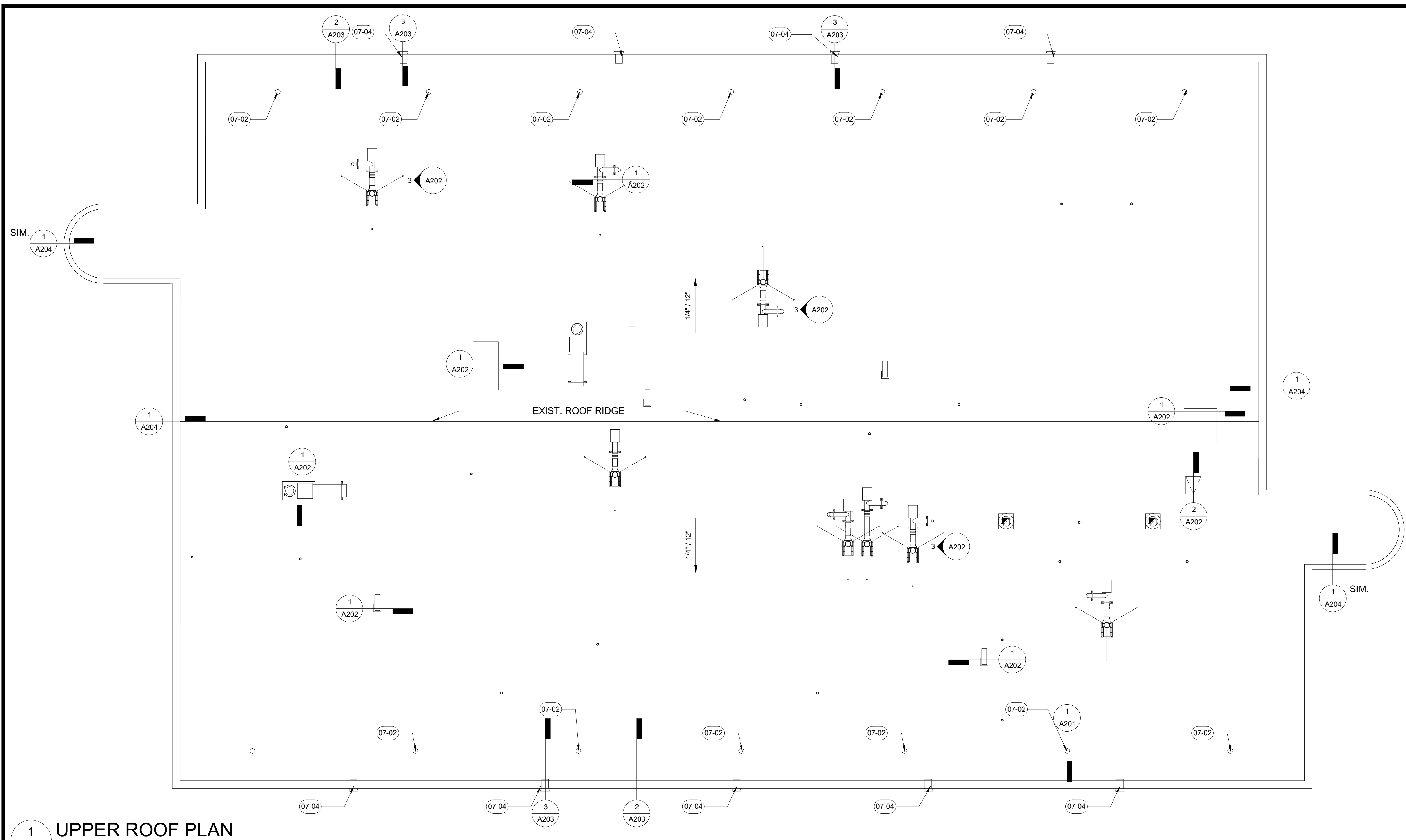
NRC RE-ROOF OVERLAY
TEXAS A&M UNIVERSITY CORPUS
CHRISTI - 100% REVIEW
LOWER ROOF DEMOLITION PLAN

REVISIONS:

DATE: 11/08/2024

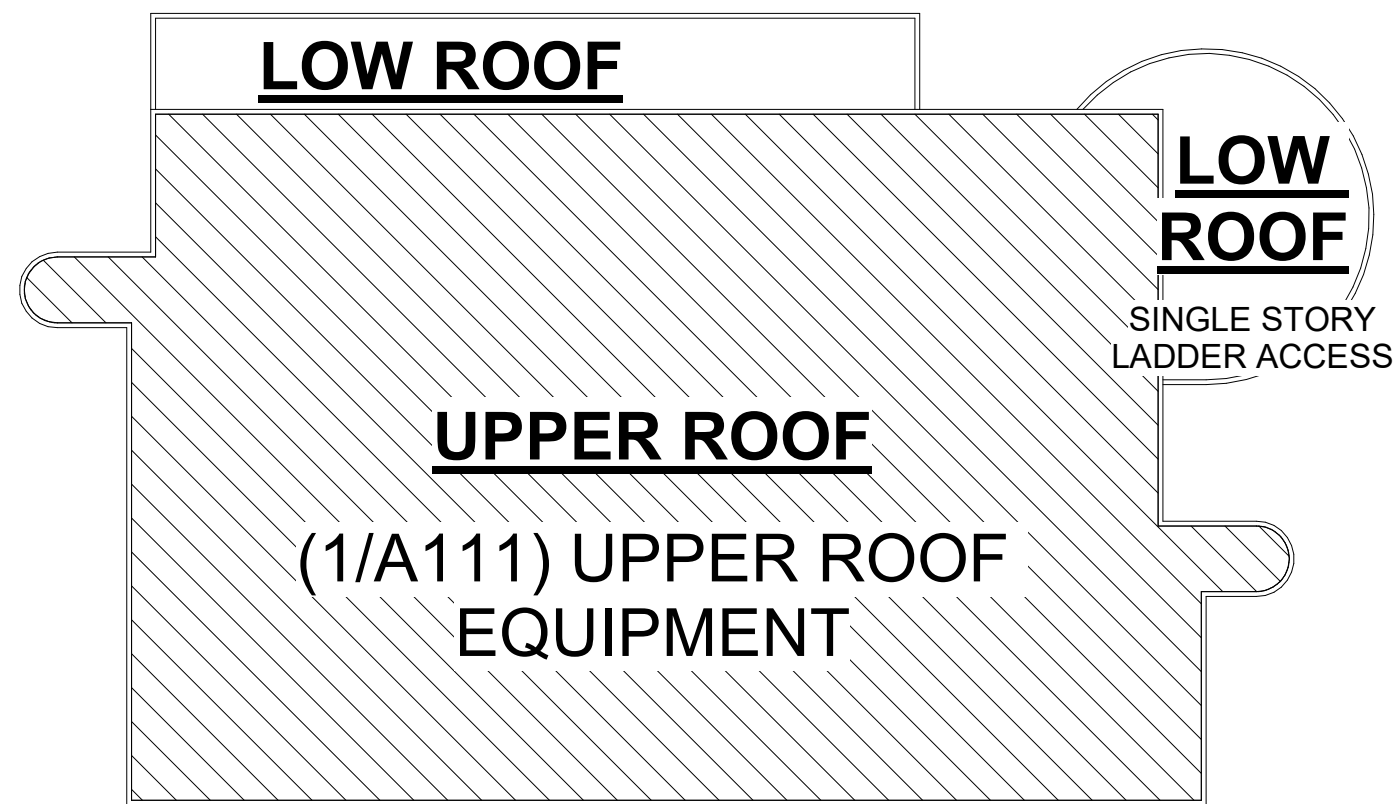
A102





1
A111
UPPER ROOF PLAN
3/32" = 1'-0"
0' 4' 8' 16'

SINGLE STORY LADDER ACCESS



ROOF LOCATOR MAP
NOT TO SCALE

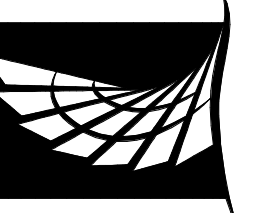
General Keynotes	
Key Value	Keynote Text
07-02	REPLACEMENT ROOF DRAIN ASSEMBLY - SEE 1/A201
07-04	RECONSTRUCT ROOF SCUPPER ASSEMBLY - SEE DETAILS 3 & 4 A/203

ROOF PLAN LEGEND

- : PLUMBING VENT WITH ASSOCIATED FLASHING - SEE 2/A201
- : DRAIN SCUPPER / OVERFLOW SCUPPER
- : BELIEVED EXIST. DIRECTION OF SLOPE
- ⊞ : ACCESS HATCH

GENERAL NOTES

- SLOPES INDICATED ARE APPROXIMATE EXISTING ROOF SURFACE SLOPES. CONTRACTOR TO VERIFY POSITIVE DRAINAGE ROOF SLOPE @ CONDITIONS PRIOR TO BEGINNING WORK.
- NEW FLUID APPLIED ROOF SYSTEM OVER EXIST. MODIFIED ASPHALT ROOFING SYSTEM PREPARED AS SPECIFIED.
- 316L / No.3 FINISH SST. SHEET METAL EDGE METAL FLASHING FINISH - SEE DETAILS 2/A203, 3/A203 AND 1/A204 - TYPICAL
- 316L / No.3 FINISH SST. SHEET METAL PARAPET CAP FLASHING
- REINSTALL, TEST, AND RECERTIFY EXISTING LIGHTNING PROTECTION SYSTEM - REPLACE COMPONENTS AS REQUIRED - TYPICAL
- ALL ROOFTOP MOUNTED EQUIPMENT WITH ELECTRICAL SERVICE **TO REMAIN**. ELECTRICIAN SHALL TEST PRIOR TO DISCONNECT BRINGING NON-FUNCTIONAL EQUIPMENT TO ATTENTION OF OWNER & ARCHITECT. ELECTRICIAN SHALL RE-CONNECT & TEST EQUIPMENT WHEN UPON COMPLETION OF WORK
- REMOVE ALL TRASH AND DEBRIS FROM ROOF SURFACE. PRESSURE WASH ROOF SURFACE TO BE FREE FROM ALL DIRT (MINIMUM 2000 PSI). AREAS MUST BE FREE FROM DIRT AT TIME OF COATING INSTALLATION.
- CUT AND REPAIR ALL ROOF TOP BLISTERS. REPAIR ALL DEFICIENCIES IN CAP SHEET. PRIME REPAIR AREAS WITH WB ASPHALT PRIMER PRIOR TO ANY COLD PROCESS OR TORCH APPLIED REPAIRS. (NO TORCH APPLIED REPAIRS ARE ALLOWED ONCE PERLITE INSULATION HAS BEEN EXPOSED)
- REMOVE ALL WET/DAMAGED AREAS AS NOTED BY THERMAL SCAN. INSTALL EQUAL VALUE OF EXISTING POLYISOCYANURATE ROOF INSULATION ALONG WITH 1/2 INCH GYPSUM COVERBOARD MECHANICALLY FASTENED TO STEEL DECK. ALL INSULATION REPAIRS MUST BE DONE IN COLD PROCESS.
- PROVIDE NEW STAINLESS STEEL PITCH PANS AT ALL EXISTING LOCATIONS.
- REPAIR ALL FIELD BLISTERS WITH EITHER SOLVENT FREE COLD PROCESS OR TORCH APPLIED MATERIALS. COMPLETE ALL FIELD REPAIRS PRIOR TO INSTALLATION OF ANY FLUID APPLIED SYSTEM.
- PRIME ALL MODIFIED BITUMEN BASE FLASHINGS WITH SPECIFIED ALPHAGUARD WB PRIMER.
- INSTALL ALPHAGUARD BASE COAT AND FULL REINFORCING FABRIC AT ALL BASE FLASHINGS
- INSTALL 6 INCH FIBER REINFORCEMENT AT ALL FIELD LAPS OF EXISTING FIELD MEMBRANE.
- REMOVE ALL CLAMPING RINGS FROM DRAIN LOCATIONS. PROVIDE FABRIC REINFORCED TARGETS AT ALL DRAINS THAT EXTEND INTO DRAIN BOWL.
- COAT ALL BASE FLASHINGS, PARAPET WALLS AND FIELD OF ROOF WITH ALPHAGUARD BIO TOP COAT. ENSURE SUFFICIENT COVERAGE AT ALL BASE FLASHINGS AND FIELD OF ROOF.
- PROVIDE NEW STAINLESS STEEL COPING CAPS, MECHANICAL CURB CAPS, HOODED VENTS, SCUPPERS, OR OTHER ASSOCIATED SHEET METAL ITEMS.
- DRY IN ALL PARAPET WALLS, EXPANSION JOINTS, CONTROL JOINTS, OR OTHER WITH HIGH TEMP PEEL-N-STICK UNDERLAYMENT. EXISTING EXHAUST FAN UNITS ARE TO BE LIFTED ONLY A SUFFICIENT AMOUNT SO THAT THE CAP AND UNDERLAYMENT CAN BE REPLACED. NO DAMAGE CAN OCCUR TO THE EXISTING LAB EXHAUST UNIT ASSEMBLIES.
- PROVIDE OWNER WITH 15YR QUALITY ASSURANCE WARRANTY WITH INTERIM INSPECTIONS AND REPORTS PROVIDE BY SYSTEM MANUFACTURER UPON COMPLETION.
- 20YR OPTIONAL FOR FULL REINFORCED SYSTEM.



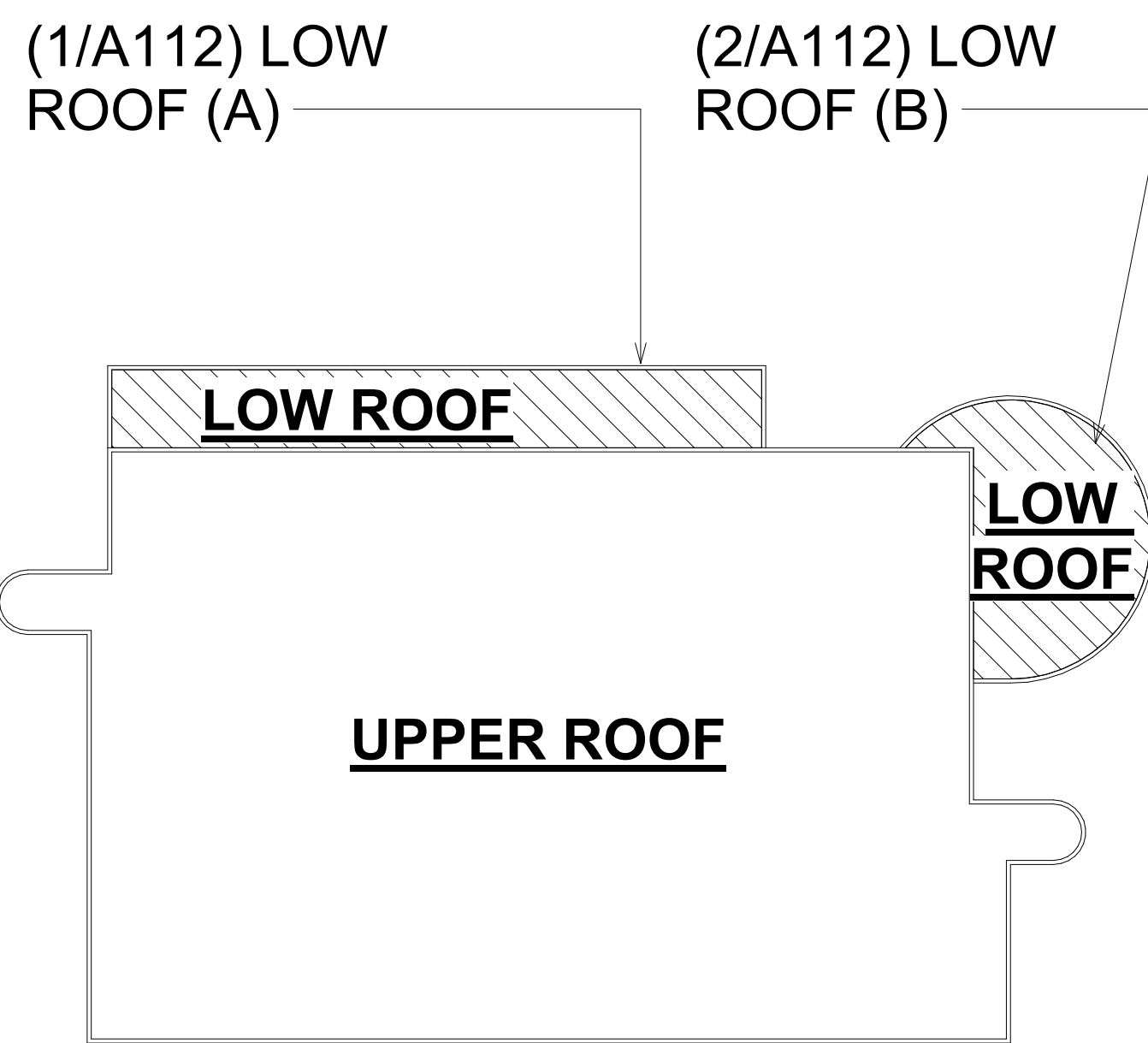
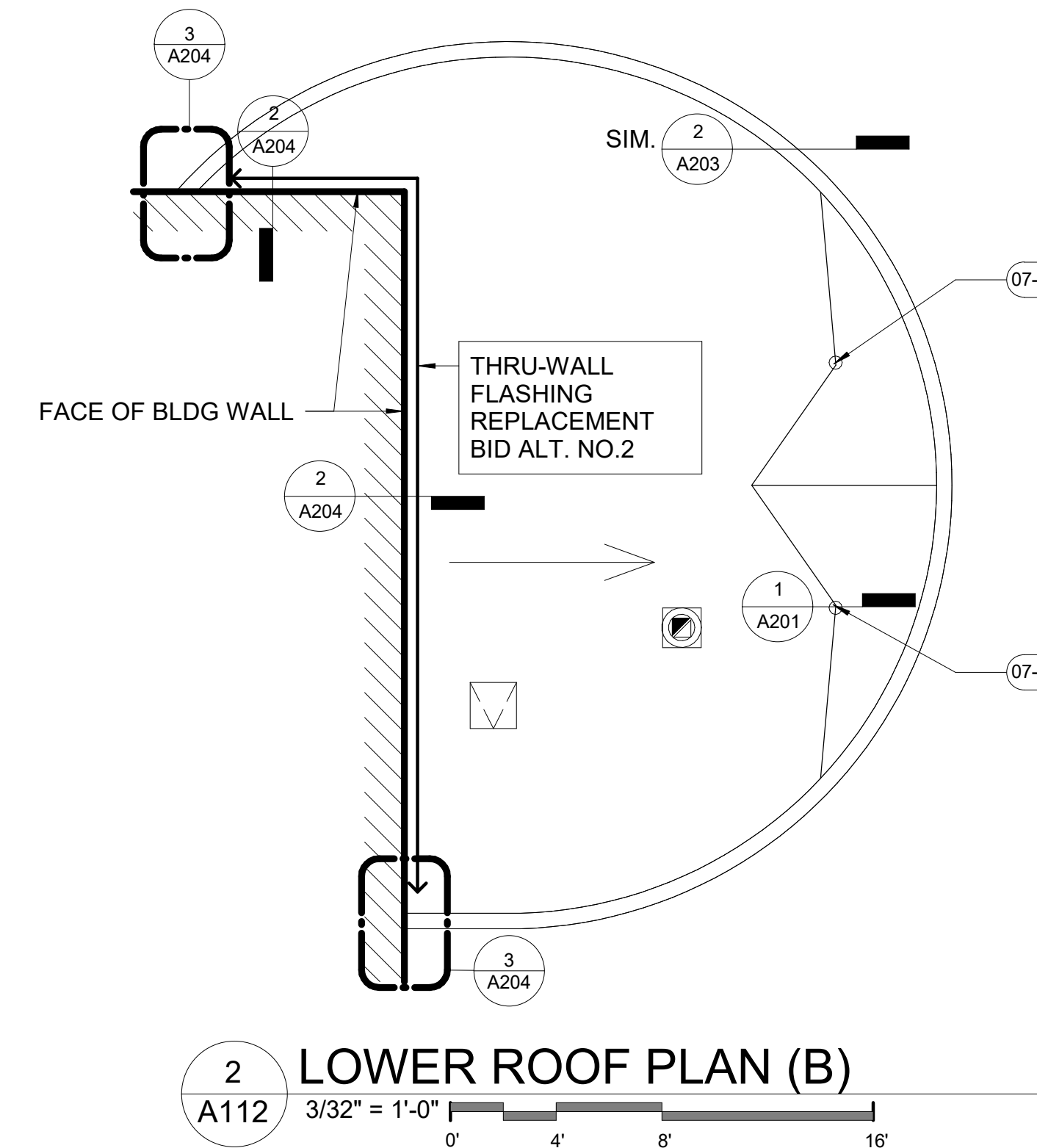
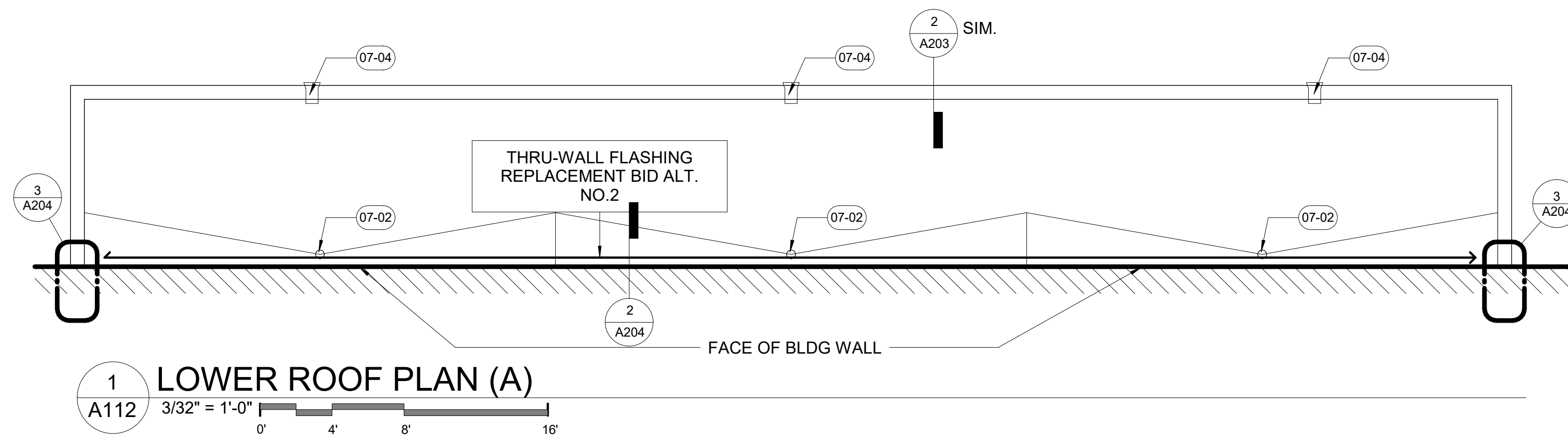
11/08/2024

NRC RE-ROOF OVERLAY
TEXAS A&M UNIVERSITY CORPUS
CHRISTI - 100% REVIEW
UPPER ROOF PLAN

REVISIONS:

DATE: 11/08/2024

A111



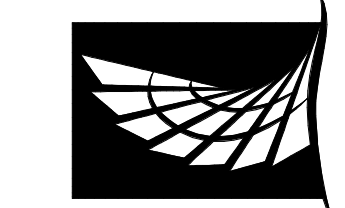
General Keynotes	
Key Value	Keynote Text
07-02	REPLACEMENT ROOF DRAIN ASSEMBLY - SEE 1/A201
07-04	RECONSTRUCT ROOF SCUPPER ASSEMBLY - SEE DETAILS 3 & 4 A/203

ROOF PLAN LEGEND

- : PLUMBING VENT WITH ASSOCIATED FLASHING - SEE 2/A201
- : DRAIN SCUPPER / OVERFLOW SCUPPER
- : BELIEVED EXIST. DIRECTION OF SLOPE
- ⊞ : ACCESS HATCH

GENERAL NOTES

- SLOPES INDICATED ARE APPROXIMATE EXISTING ROOF SURFACE SLOPES. CONTRACTOR TO VERIFY POSITIVE DRAINAGE ROOF SLOPE @ CONDITIONS PRIOR TO BEGINNING WORK.
- NEW FLUID APPLIED ROOF SYSTEM OVER EXIST. MODIFIED ASPHALT ROOFING SYSTEM PREPARED AS SPECIFIED.
- 316L / No.3 FINISH SST. SHEET METAL EDGE METAL FLASHING FINISH - SEE DETAILS 2/A203, 3/A203 AND 1/A204 - TYPICAL
- 316L / No.3 FINISH SST. SHEET METAL PARAPET CAP FLASHING
- REINSTALL, TEST, AND RECERTIFY EXISTING LIGHTNING PROTECTION SYSTEM - REPLACE COMPONENTS AS REQUIRED - TYPICAL
- ALL ROOFTOP MOUNTED EQUIPMENT WITH ELECTRICAL SERVICE **TO REMAIN**. ELECTRICIAN SHALL TEST PRIOR TO DISCONNECT BRINGING NON-FUNCTIONAL EQUIPMENT TO ATTENTION OF OWNER & ARCHITECT. ELECTRICIAN SHALL RE-CONNECT & TEST EQUIPMENT WHEN UPON COMPLETION OF WORK
- REMOVE ALL TRASH AND DEBRIS FROM ROOF SURFACE. PRESSURE WASH ROOF SURFACE TO BE FREE FROM ALL DIRT (MINIMUM 2000 PSI). AREAS MUST BE FREE FROM DIRT AT TIME OF COATING INSTALLATION.
- CUT AND REPAIR ALL ROOF TOP BLISTERS. REPAIR ALL DEFICIENCIES IN CAP SHEET. PRIME REPAIR AREAS WITH WB ASPHALT PRIMER PRIOR TO ANY COLD PROCESS OR TORCH APPLIED REPAIRS. (NO TORCH APPLIED REPAIRS ARE ALLOWED ONCE PERLITE INSULATION HAS BEEN EXPOSED)
- REMOVE ALL WET/DAMAGED AREAS AS NOTED BY THERMAL SCAN. INSTALL EQUAL VALUE OF EXISTING POLYISOCYANURATE ROOF INSULATION ALONG WITH 1/2 INCH GYPSUM COVERBOARD MECHANICALLY FASTENED TO STEEL DECK. ALL INSULATION REPAIRS MUST BE DONE IN COLD PROCESS.
- PROVIDE NEW STAINLESS STEEL PITCH PANS AT ALL EXISTING LOCATIONS.
- REPAIR ALL FIELD BLISTERS WITH EITHER SOLVENT FREE COLD PROCESS OR TORCH APPLIED MATERIALS. COMPLETE ALL FIELD REPAIRS PRIOR TO INSTALLATION OF ANY FLUID APPLIED SYSTEM.
- PRIME ALL MODIFIED BITUMEN BASE FLASHINGS WITH SPECIFIED ALPHAGUARD WB PRIMER.
- INSTALL ALPHAGUARD BASE COAT AND FULL REINFORCING FABRIC AT ALL BASE FLASHINGS
- INSTALL 6 INCH FIBER REINFORCEMENT AT ALL FIELD LAPS OF EXISTING FIELD MEMBRANE.
- REMOVE ALL CLAMPING RINGS FROM DRAIN LOCATIONS. PROVIDE FABRIC REINFORCED TARGETS AT ALL DRAINS THAT EXTEND INTO DRAIN BOWL.
- COAT ALL BASE FLASHINGS, PARAPET WALLS AND FIELD OF ROOF WITH ALPHAGUARD BIO TOP COAT. ENSURE SUFFICIENT COVERAGE AT ALL BASE FLASHINGS AND FIELD OF ROOF.
- PROVIDE NEW STAINLESS STEEL COPING CAPS, MECHANICAL CURB CAPS, HOODED VENTS, SCUPPERS, OR OTHER ASSOCIATED SHEET METAL ITEMS.
- DRY IN ALL PARAPET WALLS, EXPANSION JOINTS, CONTROL JOINTS, OR OTHER WITH HIGH TEMP PEEL-N-STICK UNDERLAYMENT. EXISTING EXHAUST FAN UNITS ARE TO BE LIFTED ONLY A SUFFICIENT AMOUNT SO THAT THE CAP AND UNDERLAYMENT CAN BE REPLACED. NO DAMAGE CAN OCCUR TO THE EXISTING LAB EXHAUST UNIT ASSEMBLIES.
- PROVIDE OWNER WITH 15YR QUALITY ASSURANCE WARRANTY WITH INTERIM INSPECTIONS AND REPORTS PROVIDED BY SYSTEM MANUFACTURER UPON COMPLETION.
- 20YR OPTIONAL FOR FULL REINFORCED SYSTEM.



11/08/2024

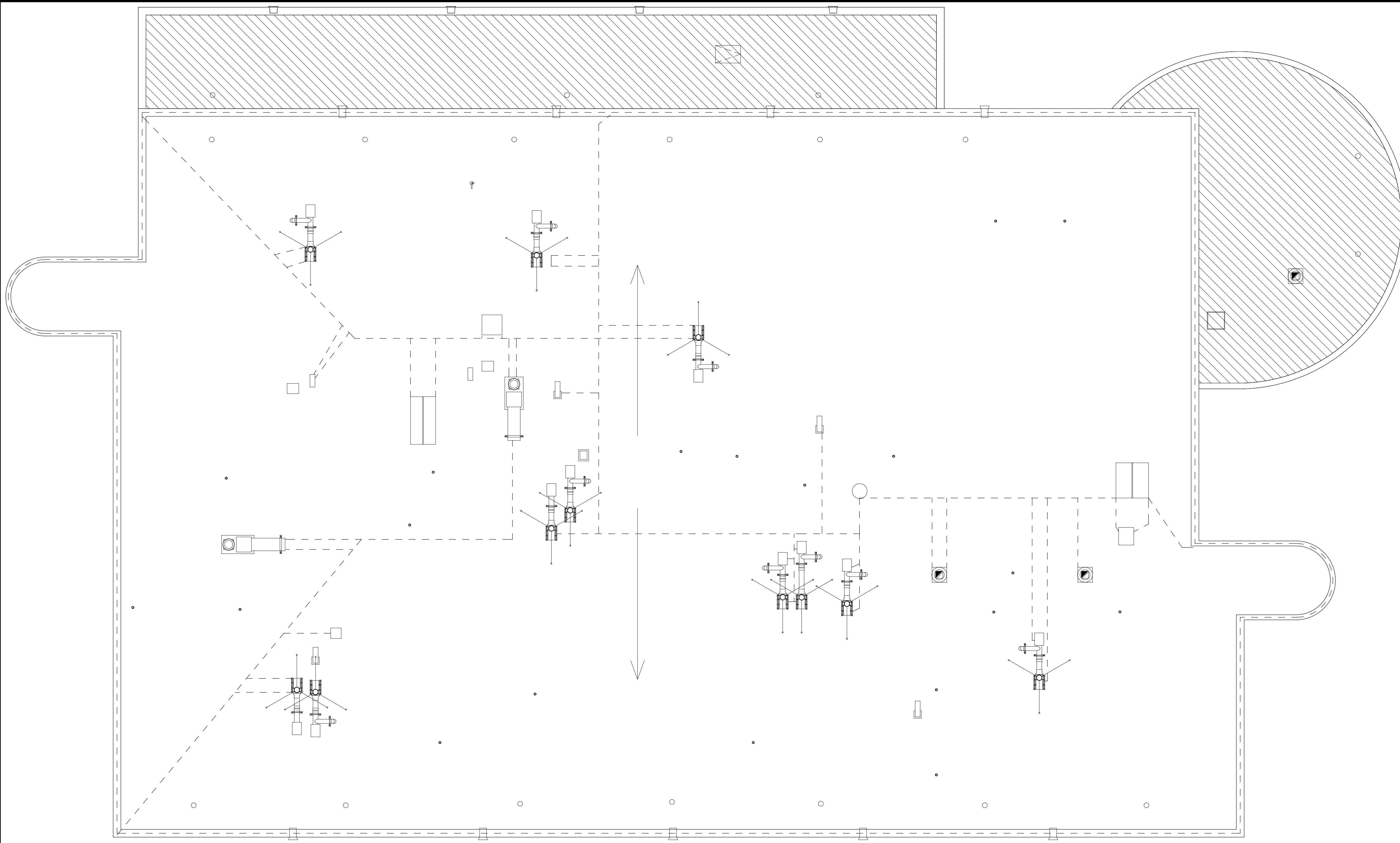
NRC RE-ROOF OVERLAY
TEXAS A&M UNIVERSITY CORPUS
CHRISTI - 100% REVIEW
LOWER ROOF PLAN

REVISIONS:

DATE: 11/08/2024

A112

NOTE: LIGHTNING PROTECTION PLAN IS PROVIDED FOR REFERENCE ONLY. ROUTING OF LIGHTNING PROTECTION DESIGN AND FINAL PATHWAYS IS THE RESPONSIBILITY OF THE LIGHTNING PROTECTION VENDOR.




1 LIGHTNING PROTECTION PLAN
 A113 3/32" = 1'-0"
 0' 8' 16' 32'

BASE BID - EXISTING LIGHTNING PROTECTION SYSTEM TO REMAIN IN PLACE (LIFT & WORK AROUND FOR COATING APPLICATION) SYSTEM SHALL BE INSPECTED, REPAIRED (AS NECESSARY), AND RE-CERTIFIED FOR SUBSTANTIAL COMPLETION.

BID ALTERNATE NO.01 DEMO & REPLACE EXISTING LIGHTNING PROTECTION SYSTEM WITH NEW CERTIFIED LIGHTNING PROTECTION SYSTEM.

TEXAS A&M UNIVERSITY
CORPUS CHRISTI



fresch
 FREEMAN SCHROEDER
 architects

www.fresch.com
 1018 Santa Fe, Suite 201, Corpus Christi, TX 78404
 (361) 667-3111



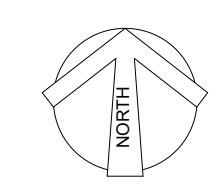
11/08/2024

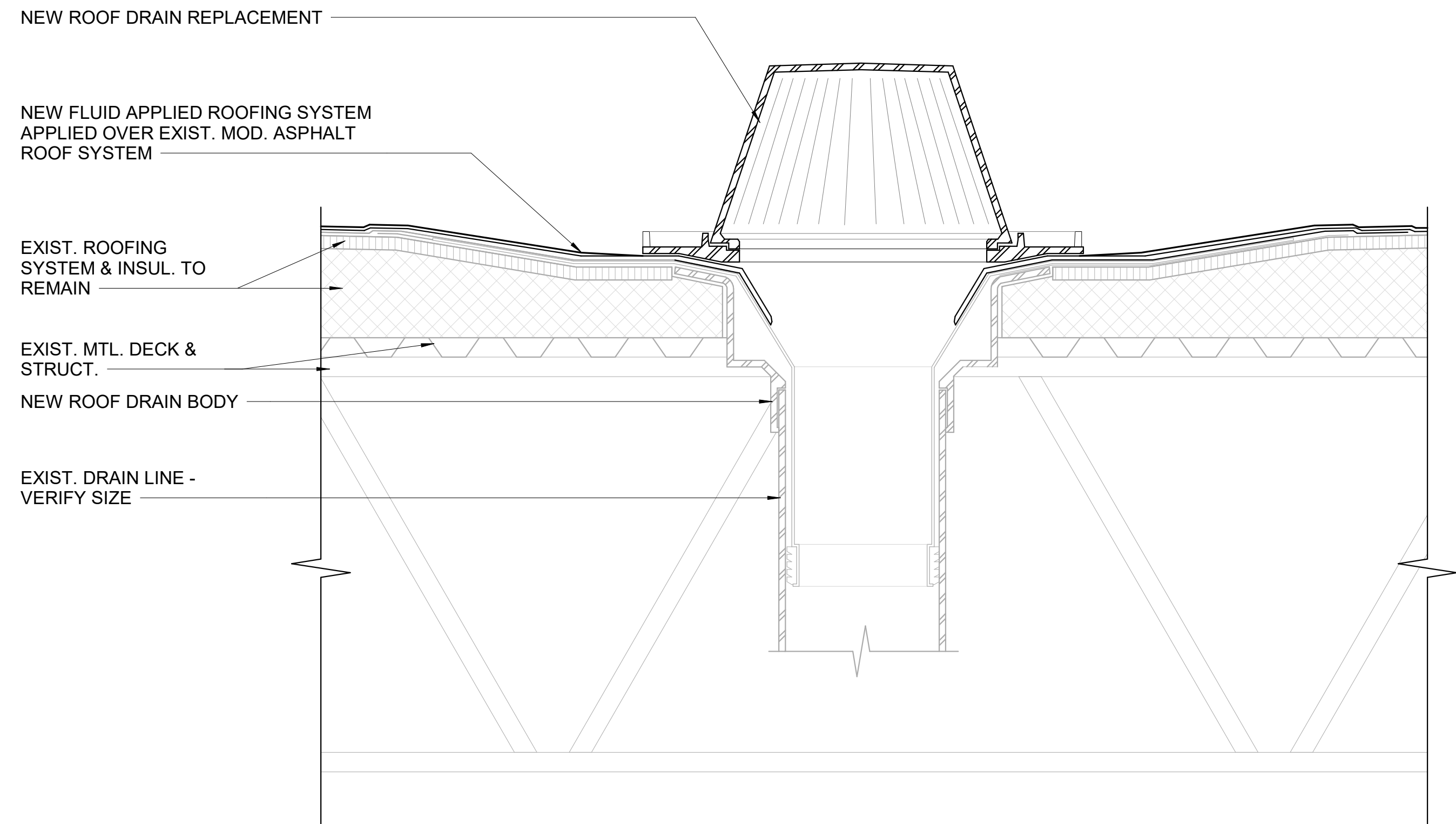
NRC RE-ROOF OVERLAY
TEXAS A&M UNIVERSITY CORPUS CHRISTI - 100% REVIEW
LIGHTNING PROTECTION PLAN

REVISIONS:

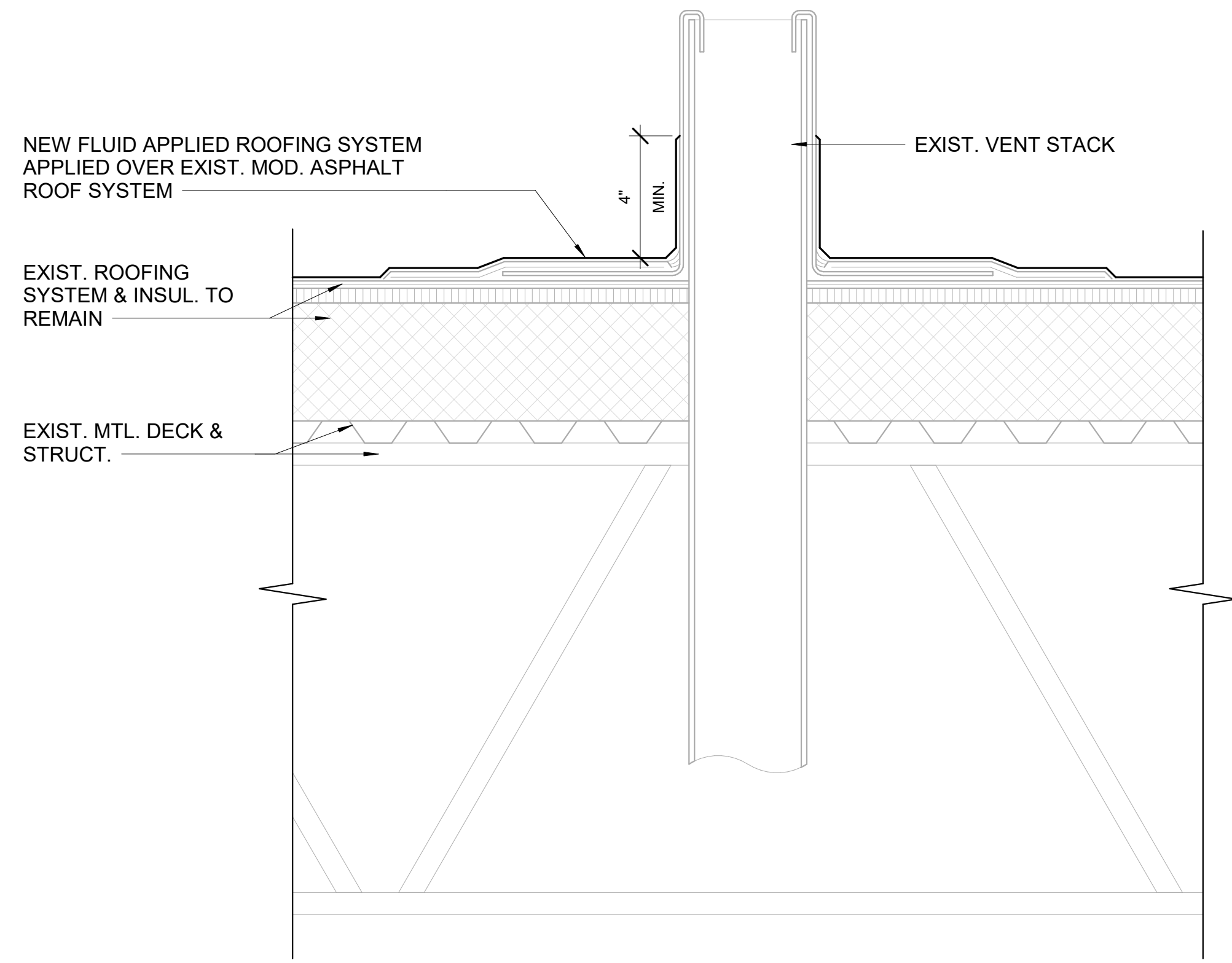
DATE: 11/08/2024

A113

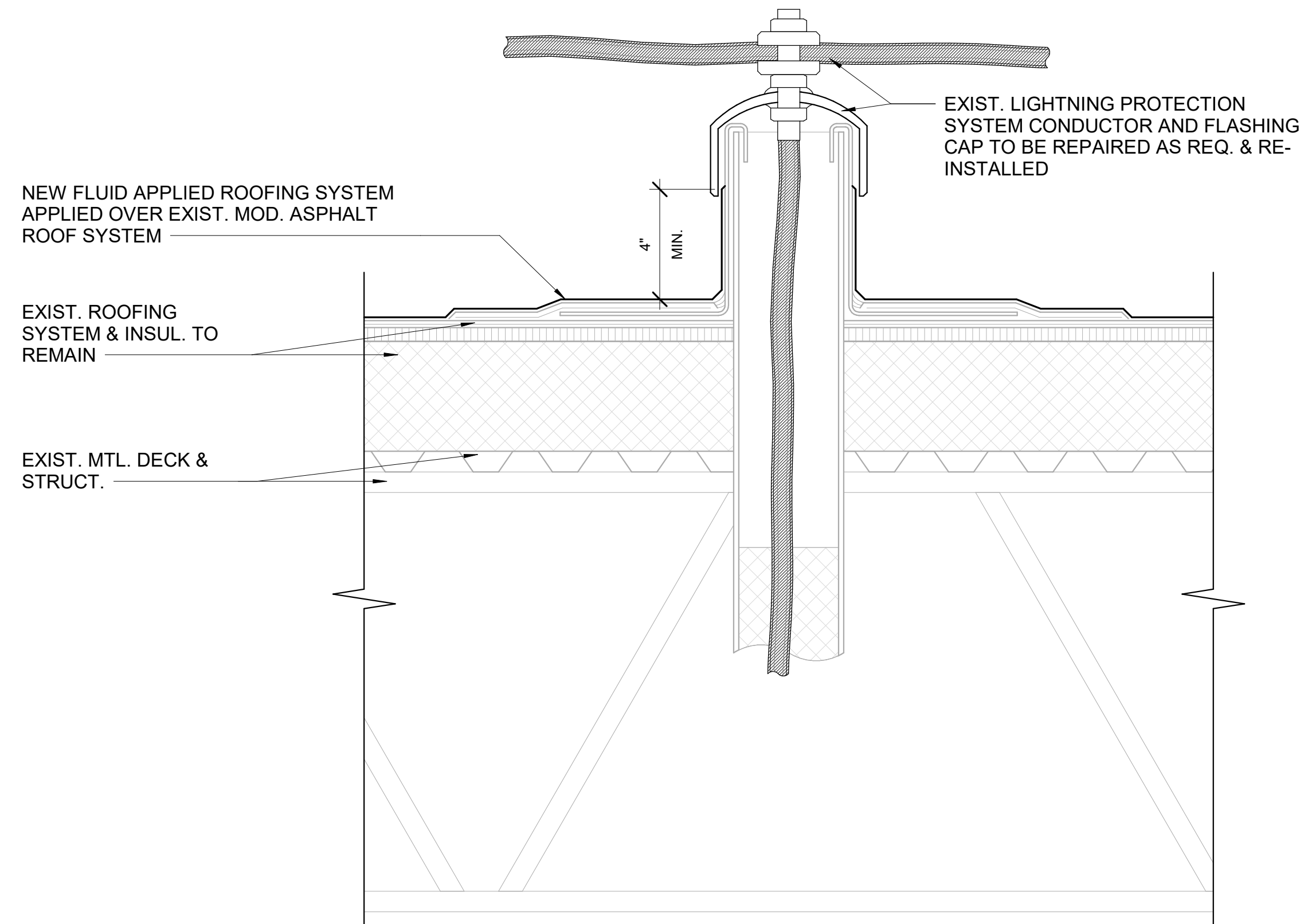




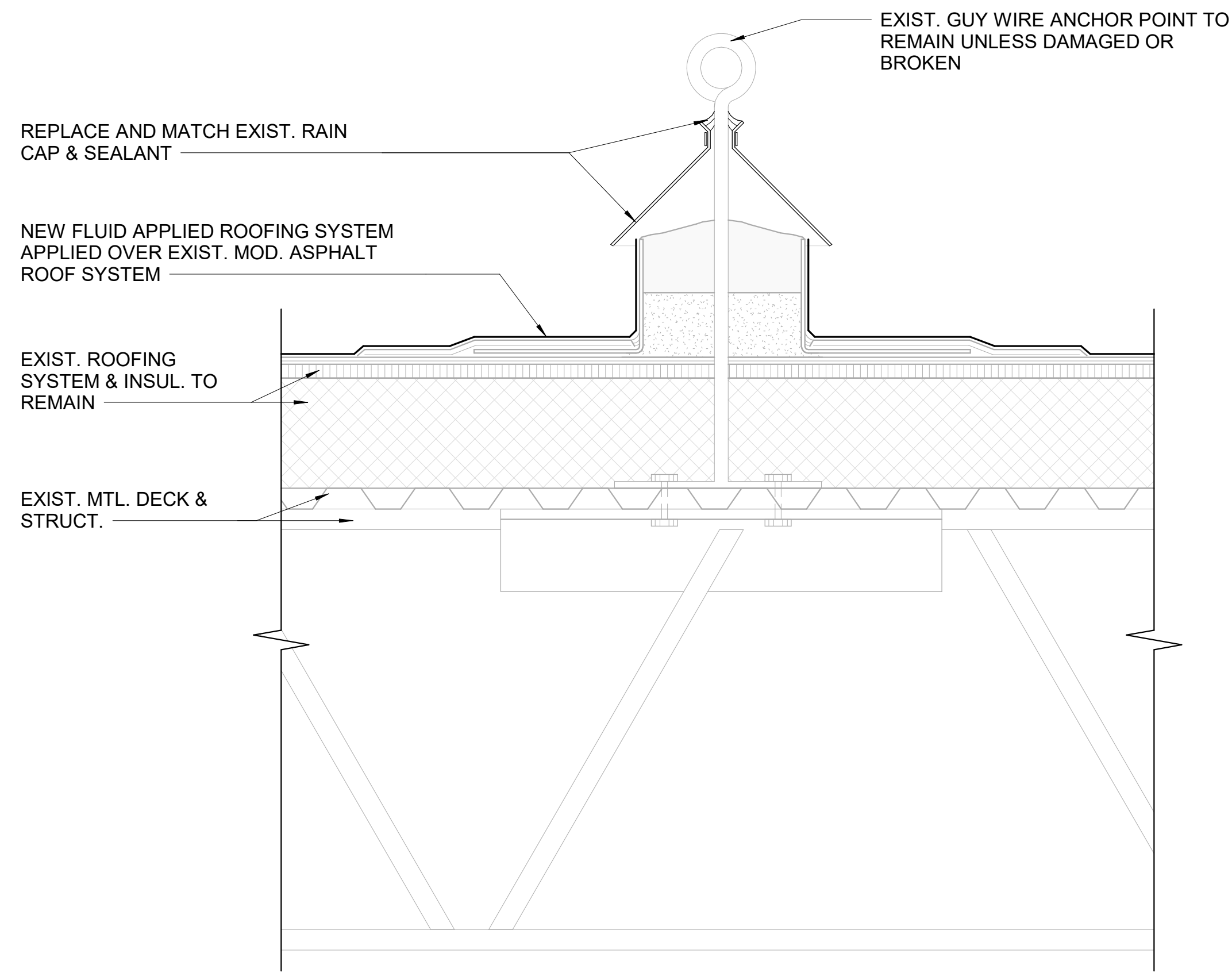
1 ROOF DRAIN
 A201 3" = 1'-0"
 0" 3" 6" 12"



2 ROOF PIPE PENETRATION - VTR
 A201 3" = 1'-0"
 0" 3" 6" 12"



3 LIGHTNING PROTECTION PENETRATION
 A201 3" = 1'-0"
 0" 3" 6" 12"



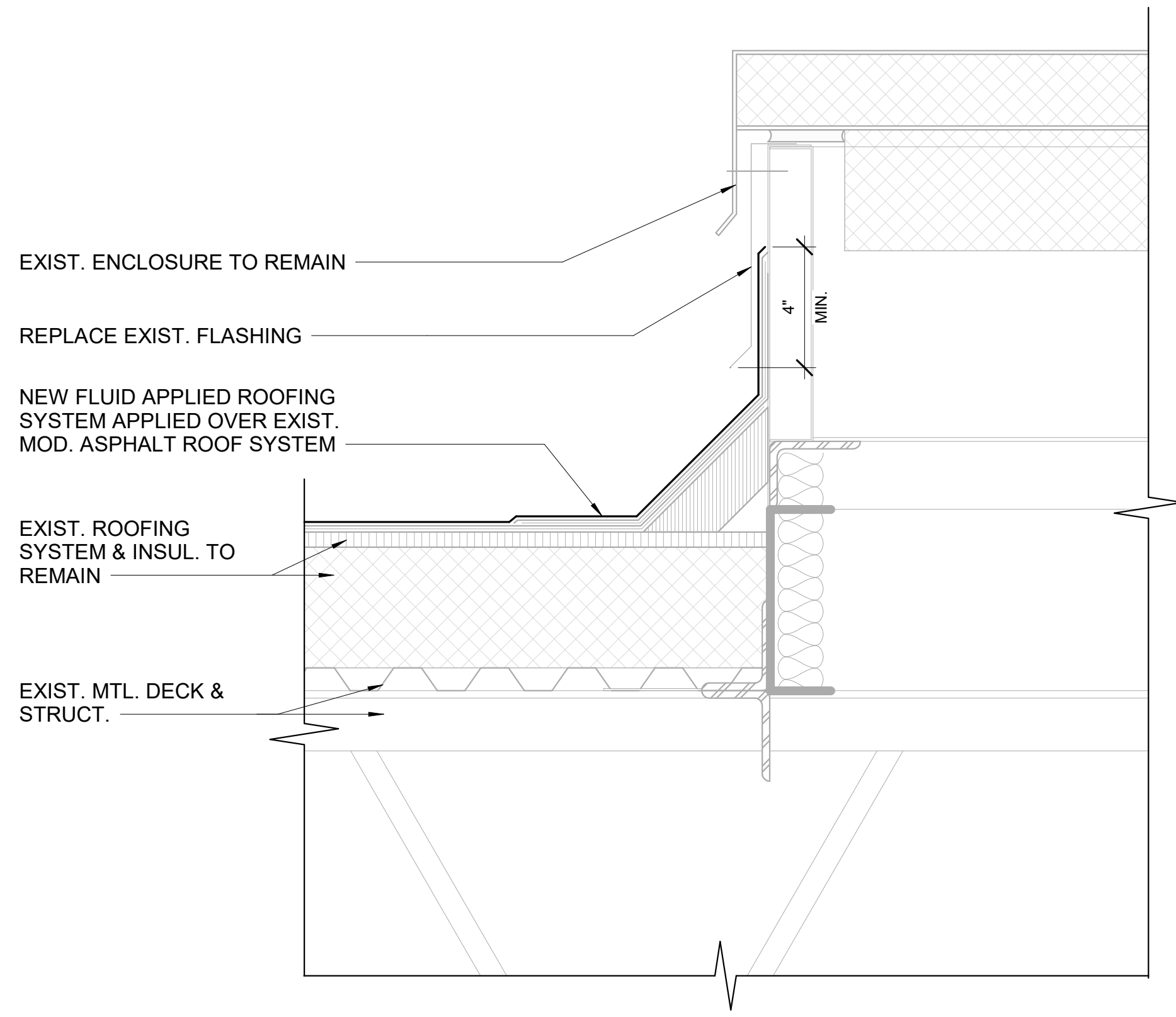
4 GUY WIRE ANCHOR POINT
 A201 3" = 1'-0"
 0" 3" 6" 12"

NOTE: UTILIZE GUY WIRE DETAILS ONLY WHEN OTHER APPLICABLE DETAILS ARE NOT ACHIEVABLE

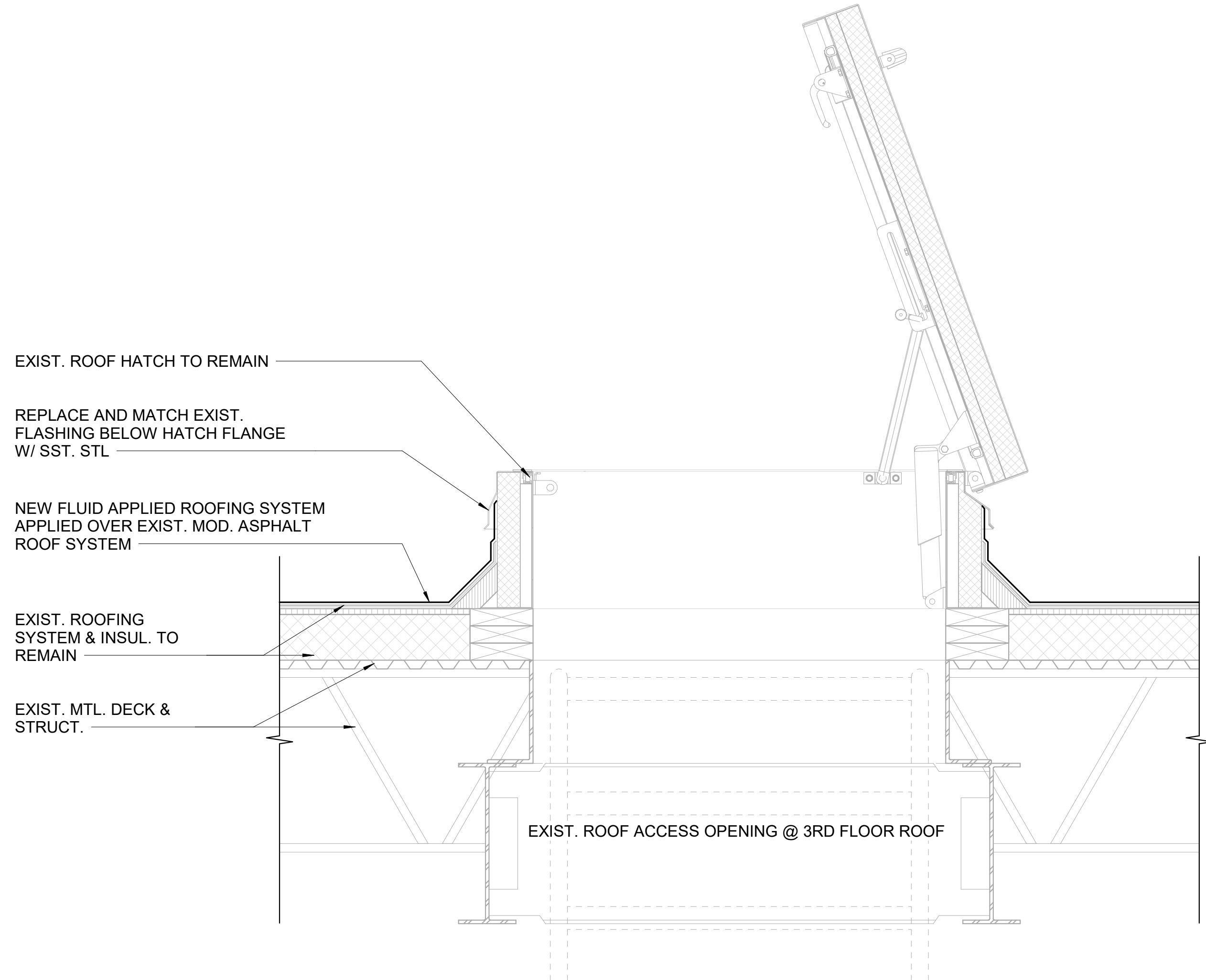
REVISIONS:

DATE: 11/08/2024

A201

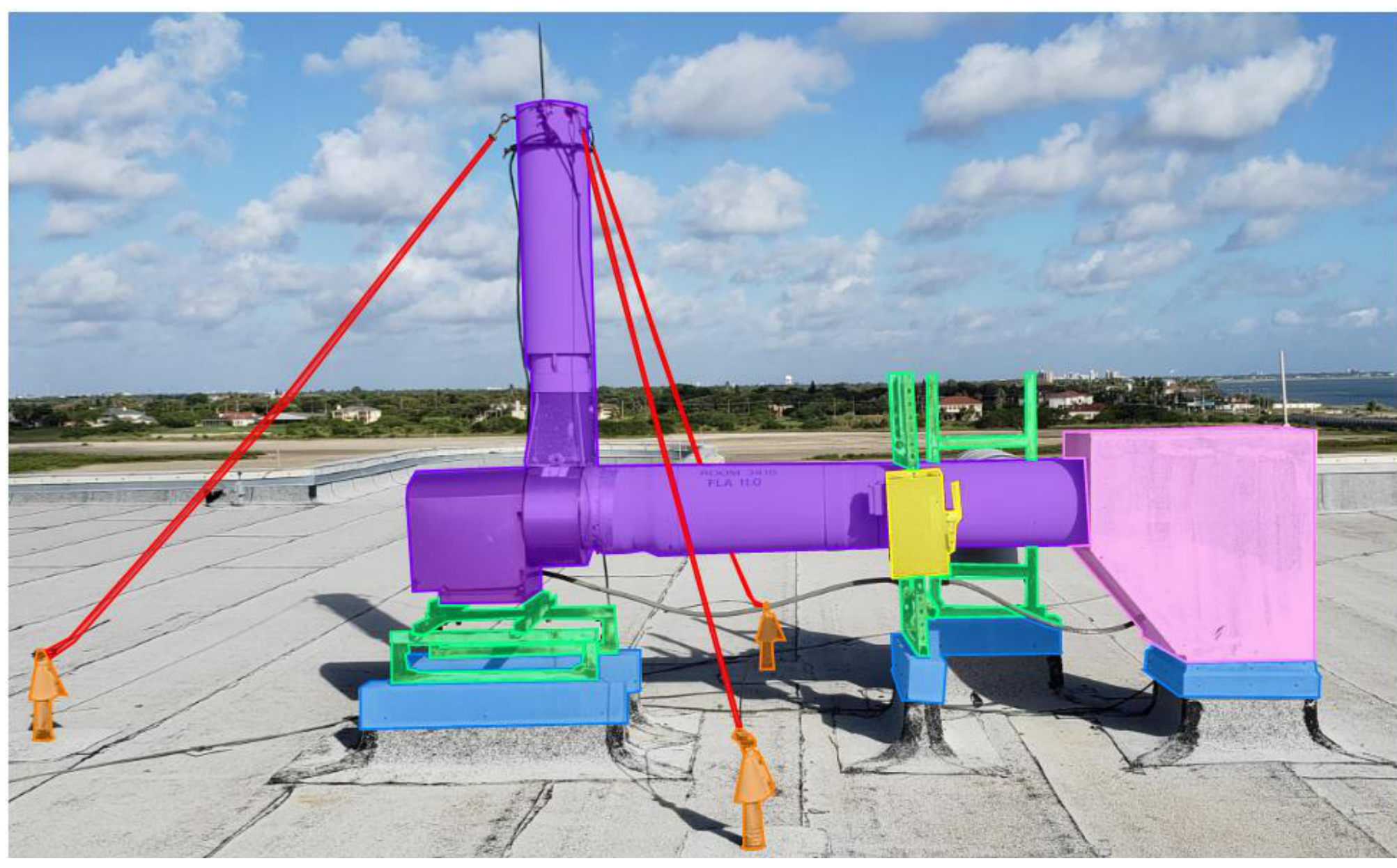


1 ROOF CURB FLASHING
 3" = 1'-0"
 0' 3' 6' 12'



2 ROOF HATCH (3RD FLOOR ROOF)
 1 1/2" = 1'-0"
 0' 3' 6' 12'

- UN-BOLT & RAISE ENTIRE EXHAUST FAN ASSEMBLY ONLY AS NECESSARY TO REPLACE CURB FLASHING PRIOR TO INSTALLING NEW 316L. STL. ST. SHT. MTL. FLASHING. INSTALL PEEL & STICK MEMBRANE ON TOP OF THE CURB & UNDER FLASHING TO SEAL ANCHOR PENETRATIONS, RE-ANCHOR TO CURB W/ NEW S.S. BOLTS
- ALL EXISTING COMPONENTS OF EXHAUST ASSEMBLY MUST REMAIN INTACT
- REPLACE ALL FLASHING SHROUDS & SEALANT PANS @ ANCHOR POINTS. REPLACE ANCHOR IF CORRODED - SEE ALLOWANCE
- REPLACE ALL EXIST. STRUCT. COMPROMISED & / OR CORRODED STRUCT. CHANNEL SUPPORT ASSEMBLIES W/ STL. ST. STRUT. CHANNEL COMPONENTS
- REPLACE SHT. MTL. DUCT SHROUD ENTIRELY - MATCH EXISTING CONFIGURATION 316L STL. ST. SHT. MTL. 24 GA. MATERIAL
- DISCONNECT & RE-CONNECT EXISTING ELECTRICAL COMPONENTS AS REQ. TEST PRIOR TO DISCONNECT & AFTER RE-CONNECT
- REPLACE EXIST. GUY WIRES W/ NEW 3/16" 316L STL. ST. WIRE ROPE

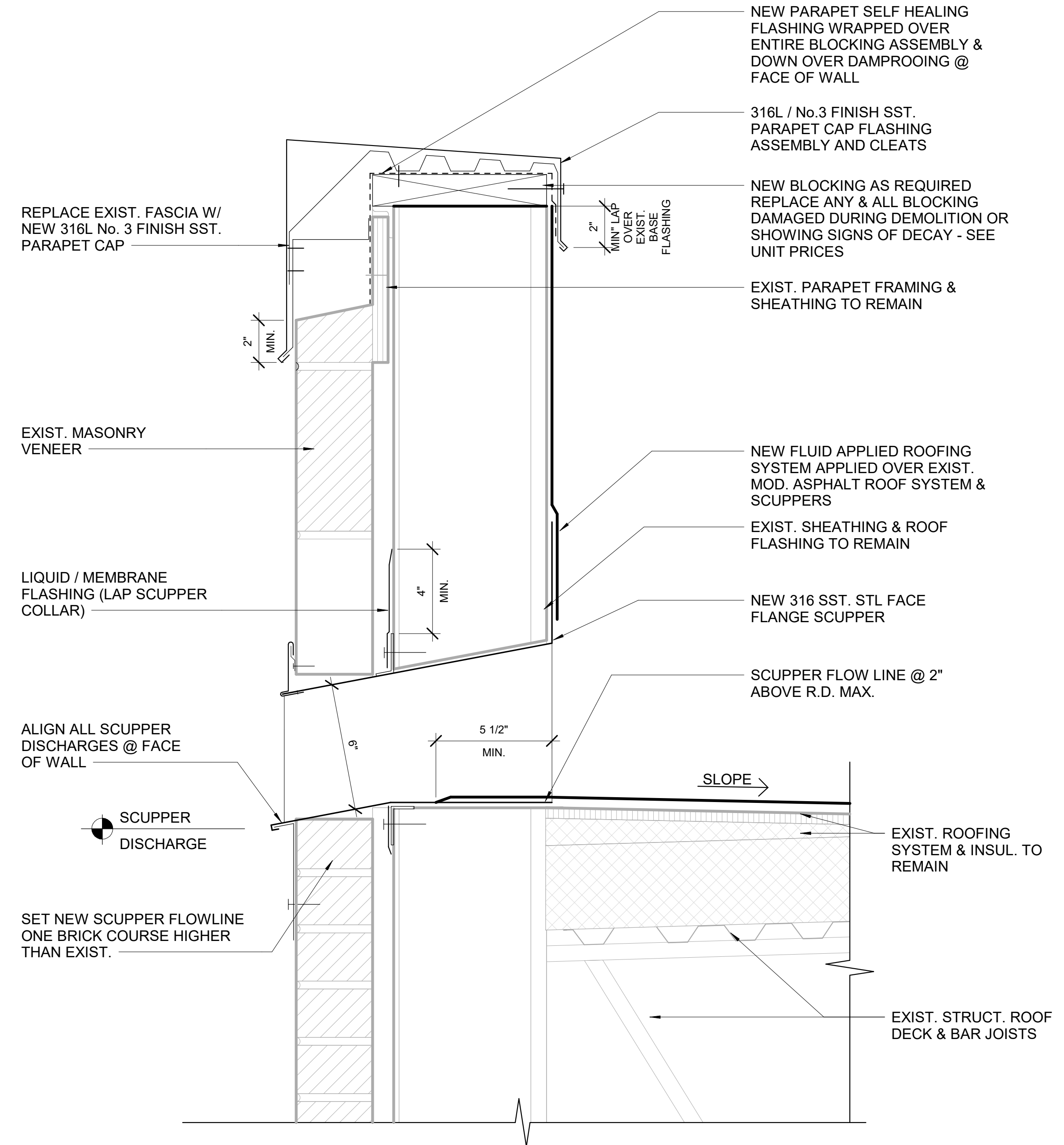
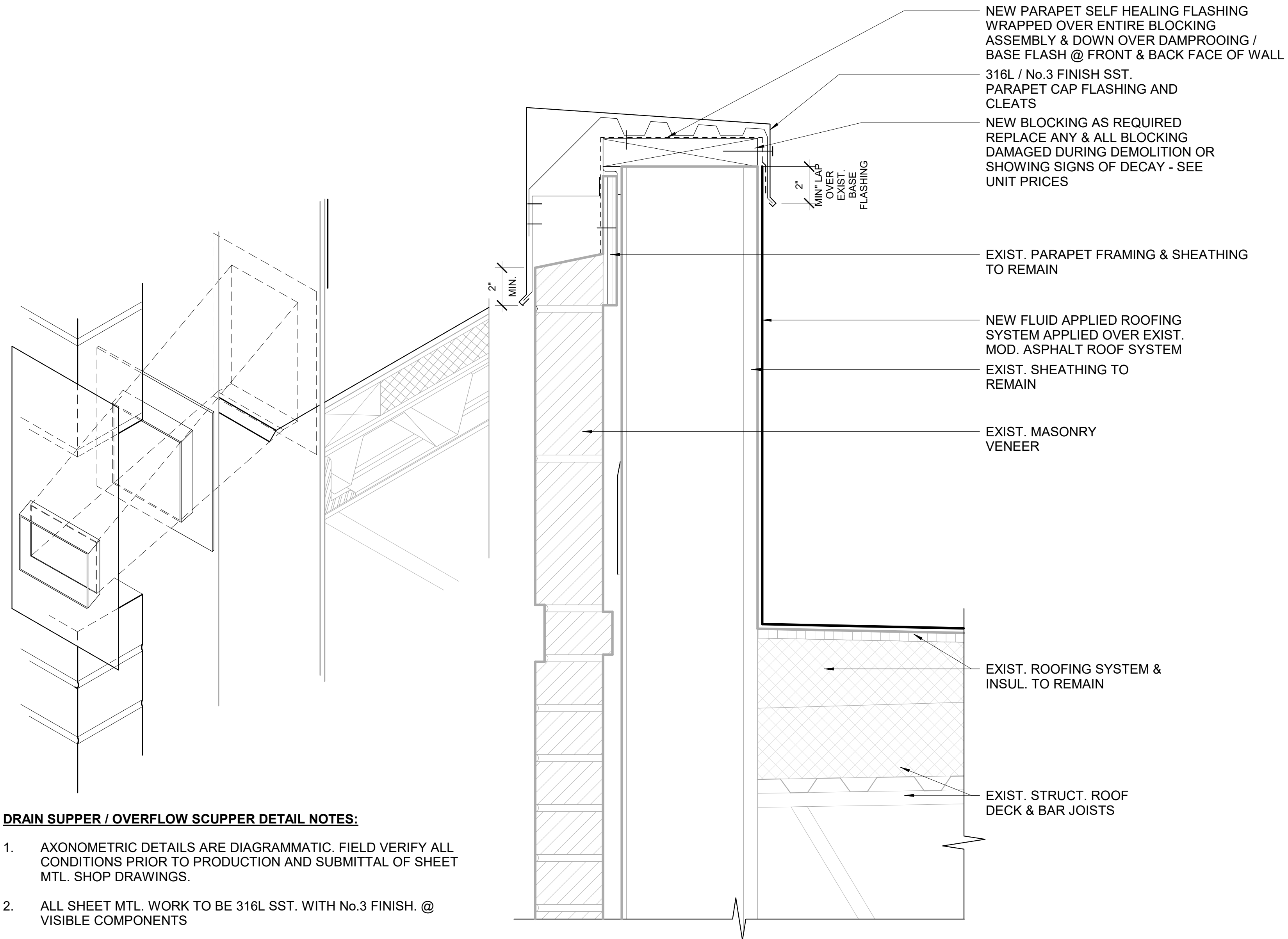


3 ELEVATION @ EXHAUST FAN
 NOT TO SCALE

REVISIONS:

DATE: 11/08/2024

A202

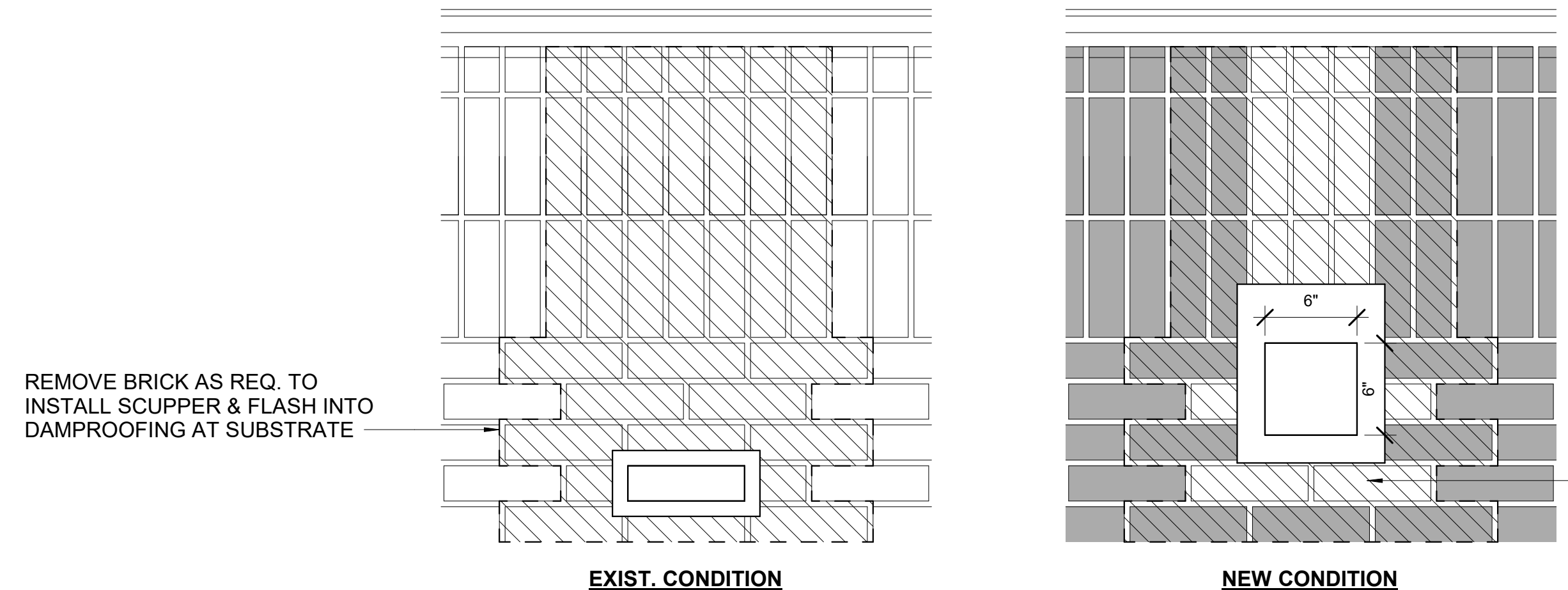


- DRAIN SUPPER / OVERFLOW SCUPPER DETAIL NOTES:**
- AXONOMETRIC DETAILS ARE DIAGRAMMATIC. FIELD VERIFY ALL CONDITIONS PRIOR TO PRODUCTION AND SUBMITTAL OF SHEET MTL. SHOP DRAWINGS.
 - ALL SHEET MTL. WORK TO BE 316L SST. WITH No.3 FINISH. @ VISIBLE COMPONENTS
 - ALL OVERLAPS SHOWN AND/OR DIMENSIONED ARE MINIMUMS.
 - SHEET MTL. WORK TO CONFORM TO SMACNA GUIDELINES.

1 SCUPPER AXON
A203 NOT TO SCALE

2 TYPICAL PARAPET
A203 3" = 1'-0"

3 PARAPET @ SCUPPER
A203 3" = 1'-0"

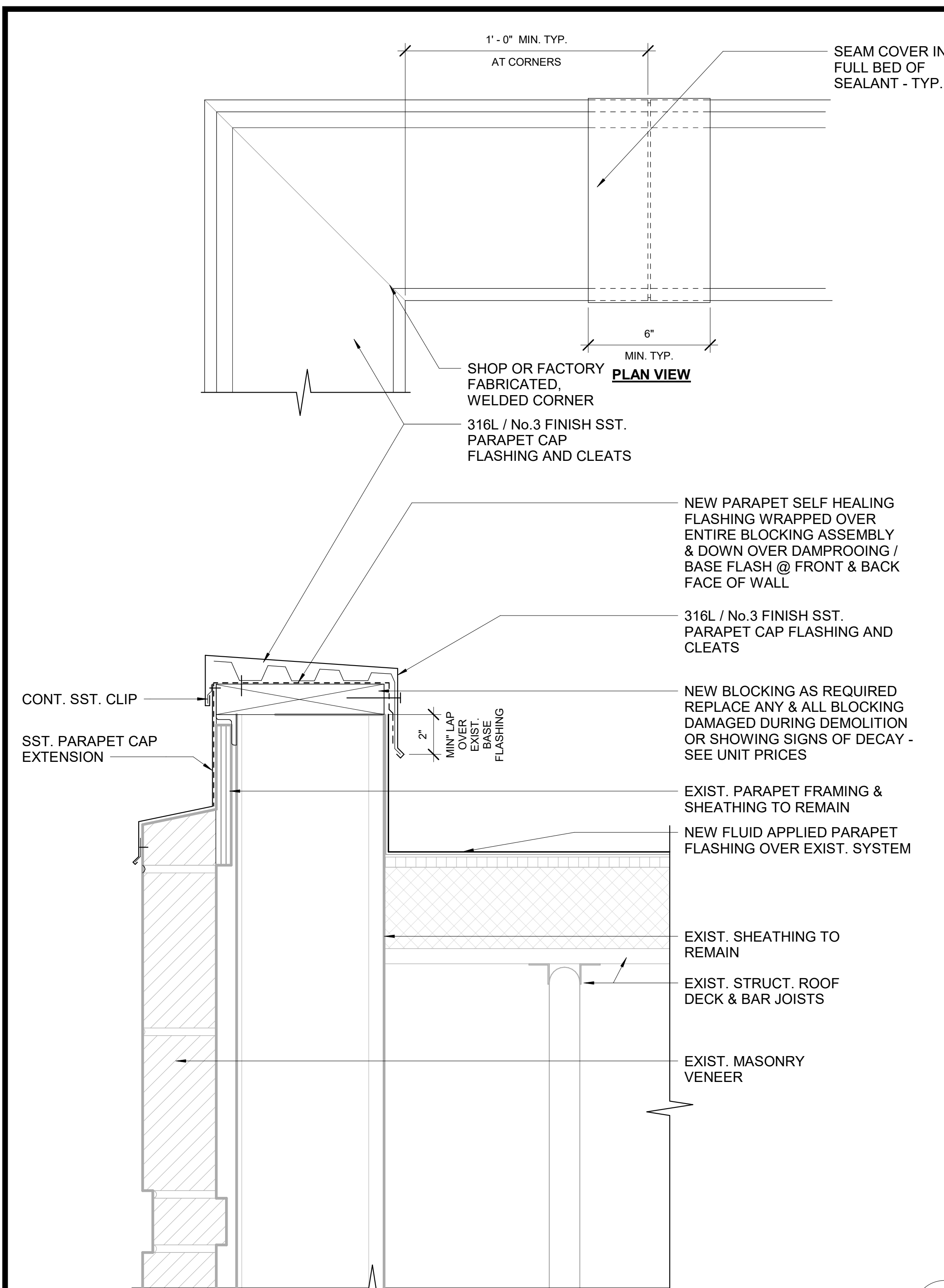


REPLACE BRICK AFTER SCUPPER HAS BEEN INSTALLED, FLASHED & RE-DAMPROOFED
NOTE: ARCHITECT MUST OBSERVE COMPLETED DAMPROOFING PRIOR TO SETTING MASONRY.

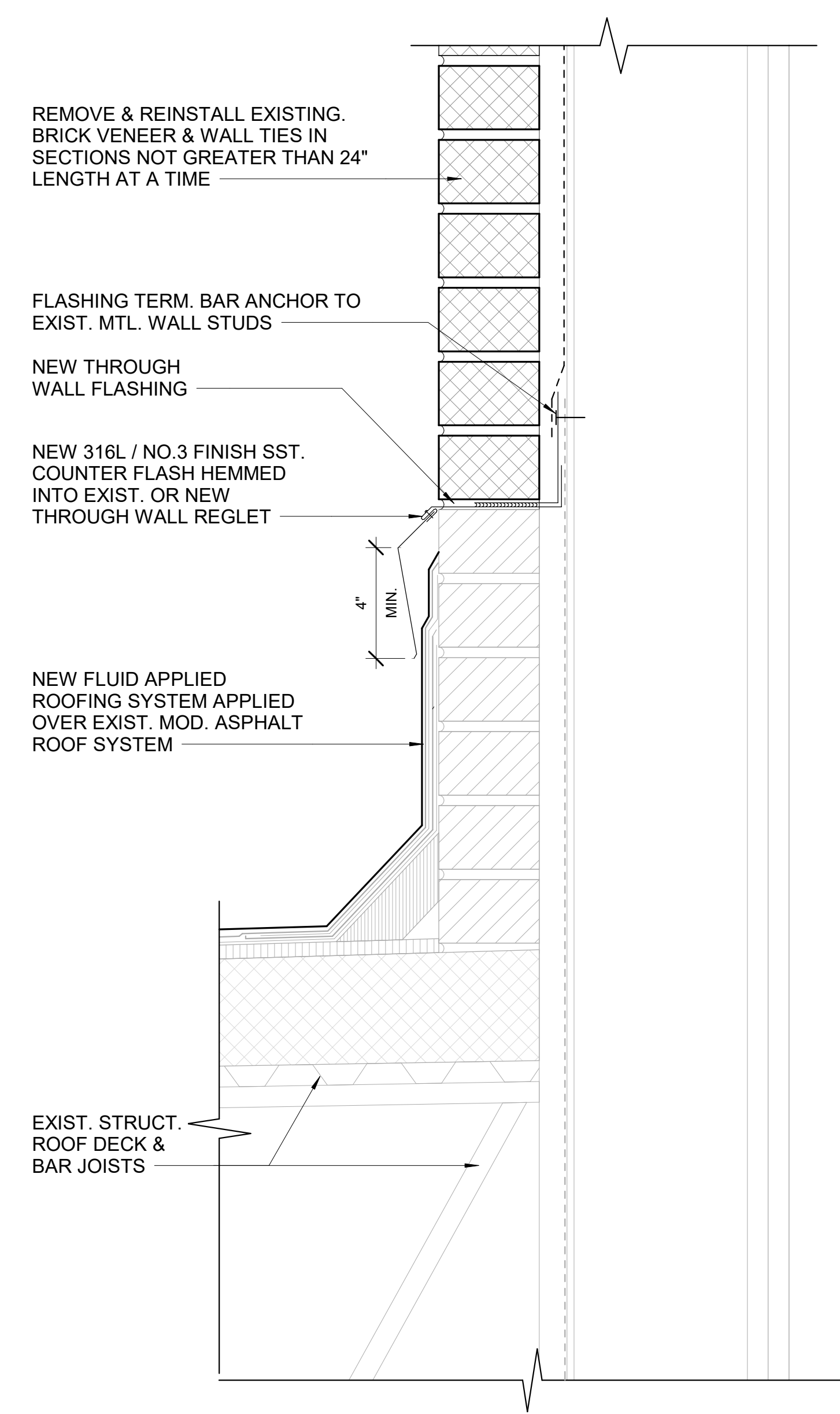
RAISE NEW SCUPPER DISCHARGE ONE BRICK COURSE

4 BRICK ELEVATION @ SCUPPER
A203 NOT TO SCALE

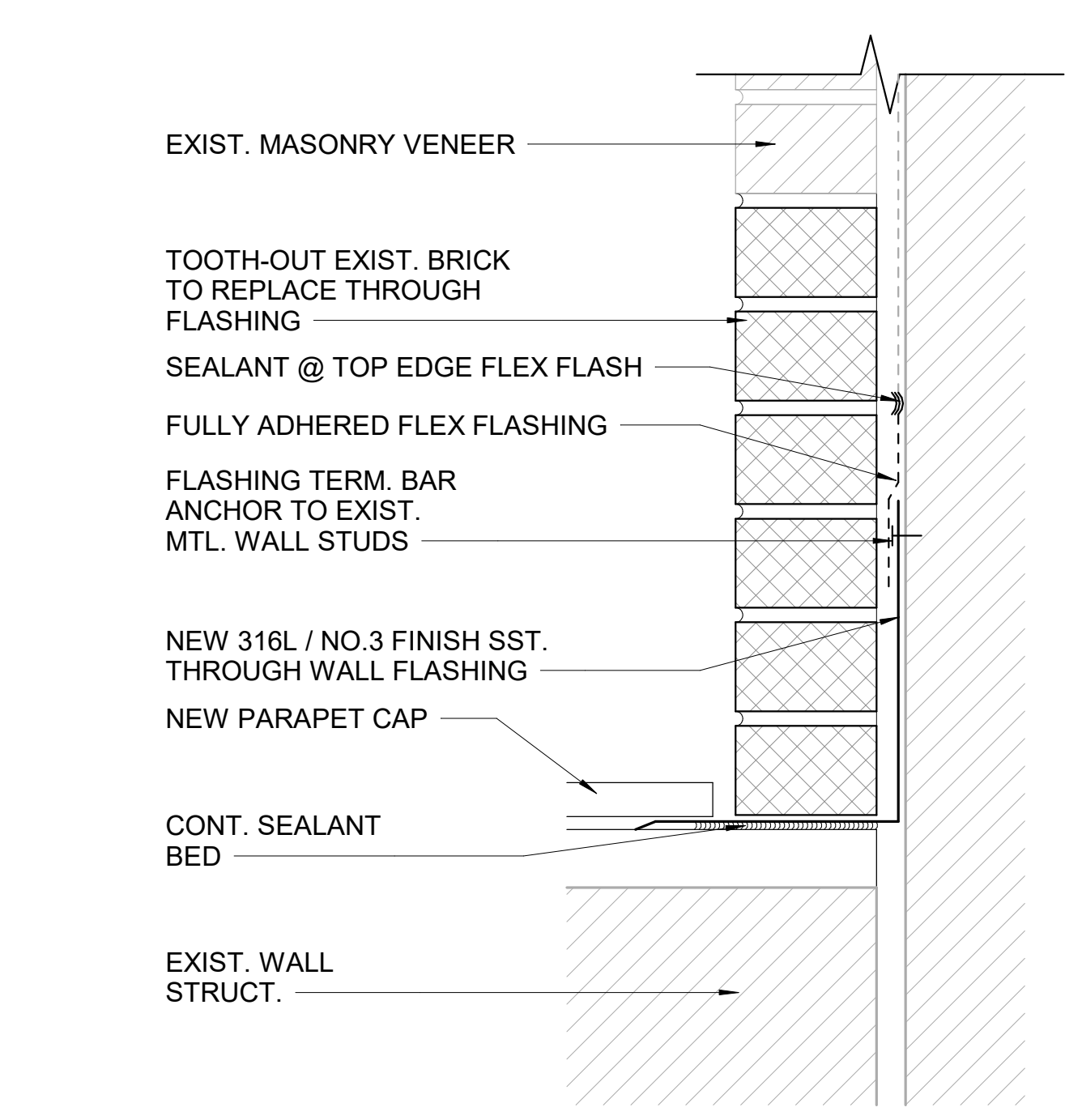
REVISIONS:



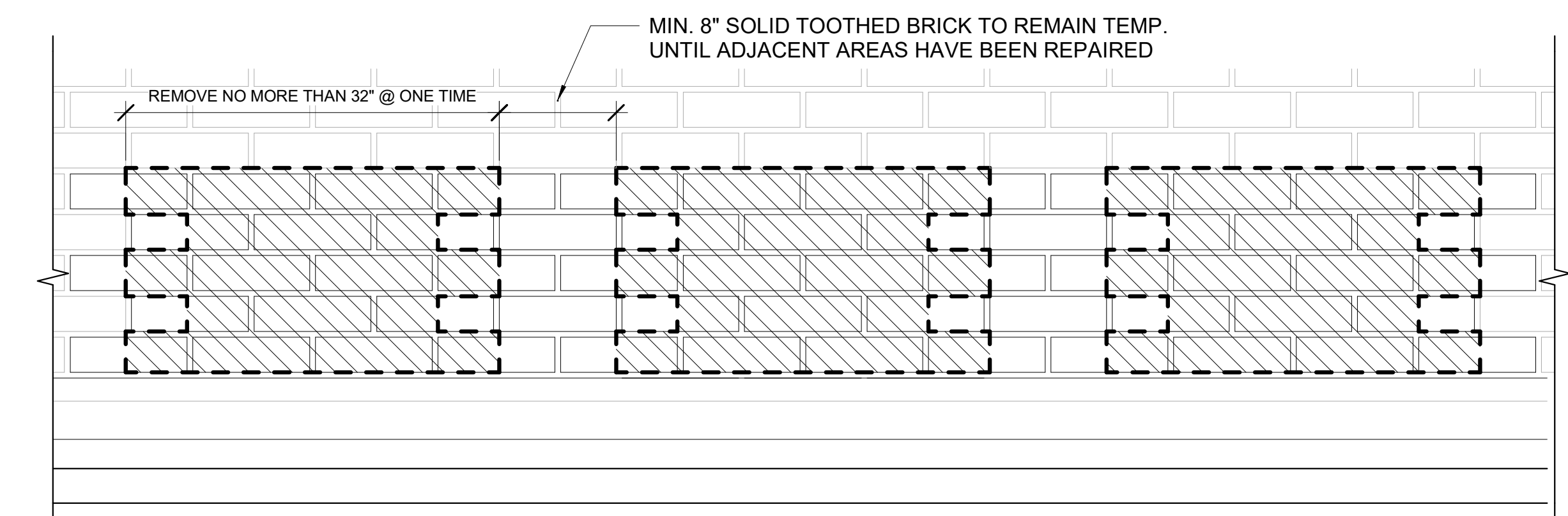
1 TYPICAL PARAPET
 A204 3" = 1'-0" 0 6 12



2 LOW ROOF WALL FLASHING
 A204 3" = 1'-0" 0 6 12



3 SECTION @ LOW PARAPET INTO WALL
 A204 3" = 1'-0" 0 6 12



4 LOW ROOF BRICK REMOVE & REPAIR ELEVATION
 A204 NOT TO SCALE

REVISIONS:
