

# Emerging trends and innovative solutions in assistive technology for higher education



**Jennifer Bradley & Gillian Benedetti**  
**E P I C Conference 2024**



**DISABILITY SERVICES**  
DEAN OF STUDENTS OFFICE

# Mobile Devices

## Powerful Tools for Inclusion



Pinch and  
Zoom



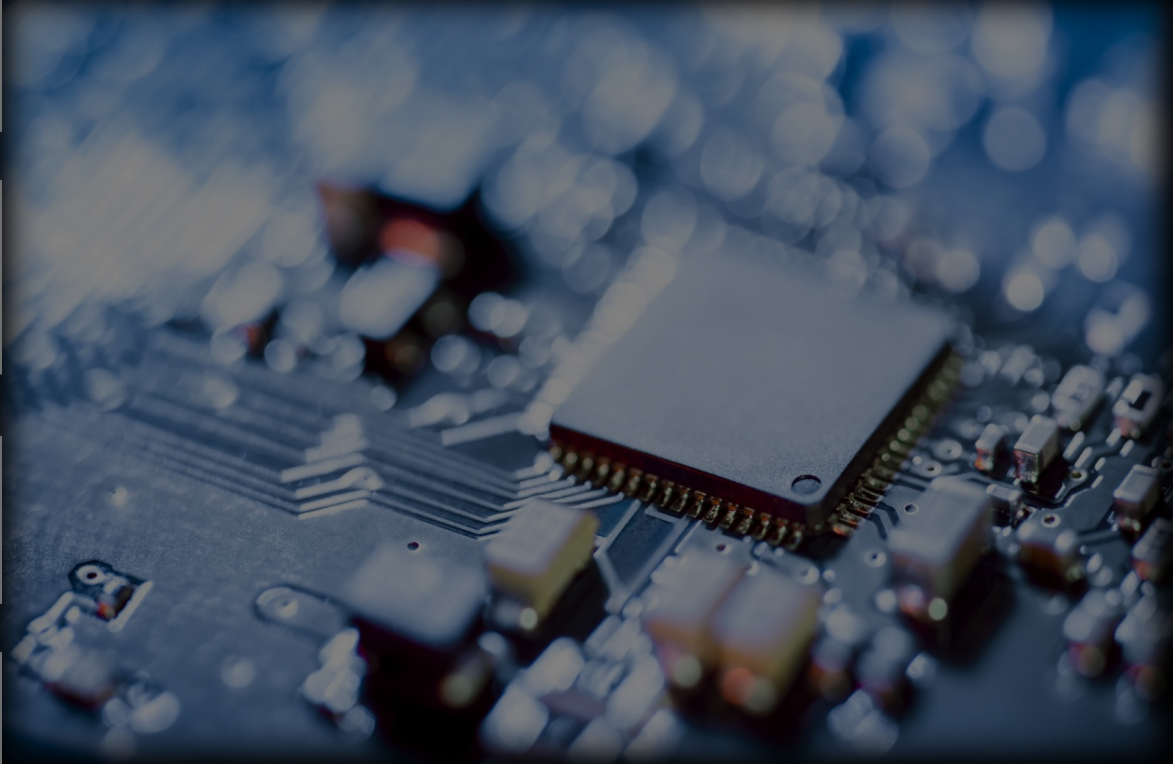
On-Screen  
Keyboards



Predictive Text

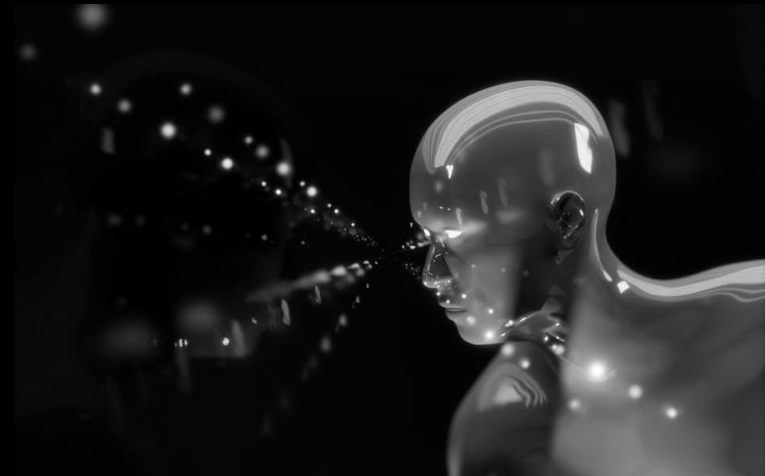


Voice Input



# Assistive Technologies: Definition

**Any** item that is used to **maintain, improve, or increase** the **functional capabilities** of people with disabilities (ATIA, 2024)



# Stories and solutions - Our students

## Amanda



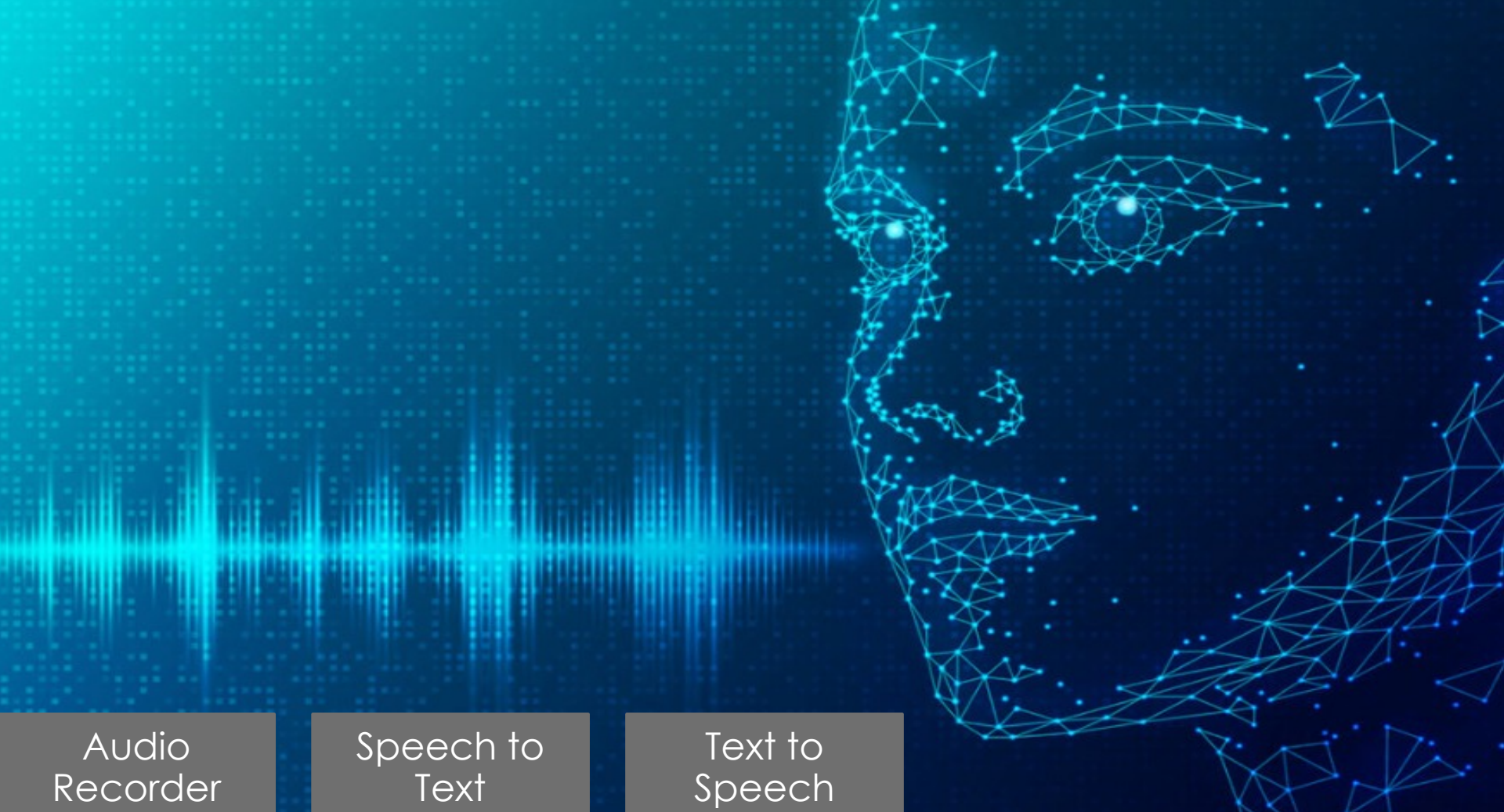
Alt. Format  
Textbooks



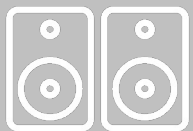
Magnification



Screenreader



Audio  
Recorder



Speech to  
Text



Text to  
Speech



# Kai

# Alex



ASSISTIVE LISTENING  
DEVICES



CART/CAPTIONING



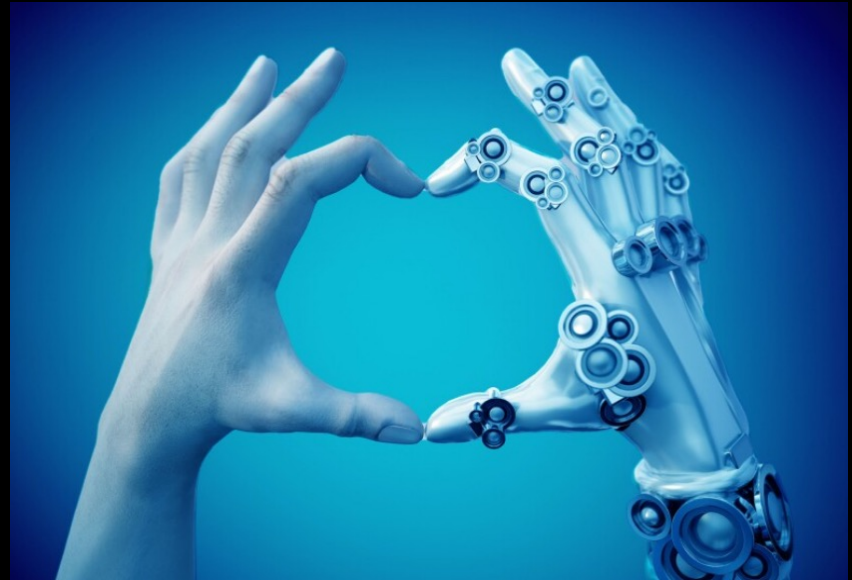
NOTETAKING APPS



# Future Directions



# Thank you!



**Disability Services**  
**Corpus Christi Hall - 116**

**Jennifer Bradley**

Interim Director

O: 361.825.3376

E: [jennifer.bradley@tamucc.edu](mailto:jennifer.bradley@tamucc.edu)

**Gillian Benedetti**

Coordinator

O: 361.825.2658

E: [gillian.benedetti@tamucc.edu](mailto:gillian.benedetti@tamucc.edu)



TEXAS A&M  
UNIVERSITY  
CORPUS  
CHRISTI

**DISABILITY  
SERVICES**  
DEAN OF STUDENTS OFFICE



# Selected Resources

Assistive Technology Industry Association. (n.d.). <https://www.atia.org/home/at-resources/what-is-at/>

McNicholl, A., Casey, H., Desmond, D., & Gallagher, P. (2021). The impact of assistive technology use for students with disabilities in higher education: A systematic review. *Disability and Rehabilitation: Assistive Technology*, 1748-3107. <https://typeset.io/papers/the-impact-of-assistive-technology-use-for-students-with-1v0h9wyrpw>

Wood, S. G., Moxley, J. H., Tighe, E. L., & Wagner, R. K. (2018). Does use of text-to-speech and related read-aloud tools improve reading comprehension for students with reading disabilities? A meta-analysis. *Journal of Learning Disabilities*, 51(1), 73-84. <https://doi.org/10.1177/0022219416688170>



TEXAS A&M  
UNIVERSITY  
CORPUS  
CHRISTI

**DISABILITY  
SERVICES**  
DEAN OF STUDENTS OFFICE