

## Construction Update...

# Two buildings underway...more to come

You don't have to be a building contractor to recognize that a lot of big changes are taking place on the Texas A&M University-Corpus Christi campus. To keep the campus community apprised of the construction projects at TAMU-CC, the *Island University News* will periodically print a short summary of building activity in "Construction Update."

### Classroom/Laboratory Office Complex (CLOC)

**Projected completion: July 1994**  
**Approximate cost: \$12,070,500 million**

Project is a 75,000 square foot facility which will provide the primary and newest instructional space for the University. Basic components include two large tiered lecture halls (275/225 students), ten tiered medium sized lecture halls (60), four computer labs, six science labs, two flat classrooms (35), and

forty-seven office spaces. This facility will be physically linked with the Faculty Center and the Center for the Sciences. The project is on schedule.

### Student Housing

**Projected completion: August 1994**

**Approximate cost: \$6 million**

Providing on-campus housing for an additional 500 students, the new apartment units will take advantage of the campus' unique island setting offering water views from many rooms. Construction has begun; some housing will be available May 15, 1994 with all units available in August.

### Central Utility Plant

**Projected completion: January 1994/July 1994**

**Approximate cost: \$12.5 million**

Project is inclusive of a central hot/chilled water generating facility, a hot/chilled loop pipe system, and

various other utilities inclusive of a fiberoptic campus backbone. A new telephone system switch and instruments was a part of this project and has been installed. An additional \$881,000 has been budgeted to fund a thermal storage tank that will be bid this fall. The project is on schedule with an expected completion date of January for the initial operation of one chiller and one boiler and July 1994 for the final completion and hook-up to campus buildings.

### Early Childhood Development Center

**Projected completion: Early 1996**  
**Approximate cost: \$6 million**

The University's nationally known program for early childhood development will expand to its own building. The Center will operate as a fully functional child learning laboratory, providing a service for academic clients as well as a laboratory for early childhood education students. Program requirements are currently being developed. Architects for the project will be selected in early spring.

### Center for Environmental Studies and Services (CESS)

**Project completion: late 1995**

**Approximate cost: \$10 million**

The CESS building will house See "Construction" page 2



**Future President Casts Vote-Arnoldo Pena drops his ballot in the box at Fall Fest, September 30, as Student Government Reporter and Arts & Humanities Senator Barbara Greenwood watches. Pena, unopposed, won the student government presidential position.**

## Pena takes helm of Student Government

The results of Texas A&M University-Corpus Christi's Student Government elections were finalized Friday, October 1, naming Arnoldo Pena as the new Student Body President. Pena takes the helm of the student's representative body this Wednesday, October 6, at the group's 2 p.m. meeting in Conference Room 1 of the Glasscock Memorial Student Center. Pena will become the first Student Body President to take office under the University's new name.

Three senators were elected to represent the College of Arts and Humanities. Lola McLeister and

Christie Olivarez, both represented on the election ballot, earned their seat by garnering majority votes. In addition, write-in candidate Jackie Cuevas Sandovar won a seat on the senate.

The College of Business Administration had two senatorial positions open. Amanda De La Garza won her seat outright; Nicole Dahlbery and Angela Barberce, both write-in candidates, tied for the second seat.

In the College of Education, all three candidates locked in their seats. That college's newly elected senator See "Election" page 4

## Announcing Telephone Registration

### Dial-A-Class technology comes to TAMU-CC

"It took me all of five minutes and it was really easy," said Director of Admissions Margaret Dechant, one of several campus "guinea pigs" who volunteered to test the new telephone registration system which makes it debut on the Texas A&M University-Corpus Christi (TAMU-CC) campus next month.

The new telephone registration system "was designed for student convenience," stated Registrar Dr. Larry Yeater. "It will permit you to register, adjust your schedule and check your schedule from any touch-tone telephone. You even have the option of paying over the phone with a MasterCard or Visa credit card."

Testing on the new system, tentatively called PhonReg for short, is almost complete. The official debut is set for November 15, when students will be able to use PhonReg to early register for Spring 1994 classes.

According to Yeater, a packet of instructions and a work sheet will be mailed to all current students as well

as those students who have been admitted and/or attended classes during the spring or summer of 1993. Spring 1994 schedules will also be mailed, with both timed to hit student mailboxes during the second week of November.

"The instructions are straight forward and easy to read, but it is best to read through the directions, complete the worksheet, and familiarize yourself with the process before dialing the PhonReg number," Yeater explained. "Once you dial in, a voice prompt will guide you after each entry. To make the whole process more accessible to students, we will have telephone registration available from 7 a.m. to 8 p.m. seven days a week, which means students can actually register from home, for example, on the weekend or in the early evening after work. It really is a very easy and convenient way to register for classes."

It is also very necessary. The Field House, traditional site of reg-

ular registration, will be undergoing a facelift beginning January 1994. That renovation project is expected to run through the summer closing the Field House to all activities, including registration. Administrative officials are hopeful participation in telephone and early registration will run between 85 to 90 percent, easing the load on the regular registration process.

Students can anticipate receiving letters in the mail by the second week of November. These letters will give complete instructions on how to register by telephone along with the student's customized registration time. Students may early register by phone any time at or after the date and time noted on their registration letter.

Look for more information on **PhonReg** in upcoming issues of the *Island University News*. And get ready to say hello to Dial-A-Class technology, goodbye to registration lines.



October 4, 1993

Volume 21, Number 3

## What's in a name?

When CCSU changed its name to Texas A&M University-Corpus Christi September 1, practically everyone associated with the Island University heralded it as a positive change for the future. However, the name change did bring with it some questions, not the least of which being, "What do I call my school?"

Corpus Christi State University was a straightforward name with an easy abbreviation. Texas A&M University-Corpus Christi is a little more challenging. Writing the name is easiest: no space around the ampersand in "A&M," and no space around the hyphen between "University" and "Corpus." The name can be abbreviated in writing to "TAMU-CC."

Pronouncing the name is a little more difficult for some people, says Vice President of Institutional Advancement H. Ken DeDominicis. "We've heard a lot of variations on the name," he said.

The correct way to abbreviate the name in speech, says DeDominicis, is "Texas A&M Corpus Christi. Or you can pronounce the acronym as either tamoo-see-see or tamoo

Corpus Christi, both are correct."

"The name game was pretty confusing for everybody," he explained. "We're trying to promote the standard name so everybody in the campus community and the community-at-large knows that we're talking about the same place. We're trying to establish a concrete image for the Island University, and a standard way of referring to this campus is a major part of that."

## TAMU-CC has record fall enrollment

For the fourth year in a row, Texas A&M University-Corpus Christi's Fall head count enrollment has posted a net increase over previous years. Fall 1993 Census Day figures released by the Office of Planning and Institutional Analysis reflect a 1.2% increase over last semester's totals, with a record breaking 4,475 people enrolled in classes.

Semester credit hour (SCH) enrollment for the Fall 1993 semester is up 2.9%, to 35,591, another all time high. Semester credit hours

represent the academic credit earned for successful completion of course work, and are the benchmark used by the Texas Legislature to trigger appropriated funds for public universities.

Hispanic enrollment for the University remained constant for the Fall semester with 34.3% of the student body of Hispanic origin.

The 1992-93 academic year saw record total enrollment for the second year in a row, corresponding to approximately an 8% growth in head-count and SCH enrollments.



**Fall Fest Showcases Student Organizations-Science Club President John Bloom shows interested students a stuffed animal which was part of the club's display at this year's Fall Fest on September 30. Students were welcomed to campus with music, hot dogs and information about all the organizations they can become a part of.**



**Name Change Day Cancellations**-Homer Gonzales (at left) and David Saenz, Jr. (at right) of the U.S. Postal Service, present Texas A&M University-Corpus Christi Vice President for Institutional Advancement H. Ken DeDominicis with a folder containing the data from the special Island University post office station which was set up on campus September 1 to celebrate the University's new name. The campus station, along with another special station set up at the free concert at Cole Park that evening, canceled 923 postcards and 614 envelopes. Proceeds from the sales of envelopes and postcards were donated to TAMU-CC.

## Documentaries Continue

University Cinema continues its free screenings of documentaries this semester every Wednesday evening in Corpus Christi Hall Room 117 at 7:30 p.m.

**Oct. 6**

**Let There Be Light** (1948, 58 min.)

Explores the rehabilitation of returning World War II soldiers who were victims of an enormous variety of psychosomatic combat disabilities. Written and produced by John Huston, this documentary was not made available to the public until years after it was completed.

**Every Day Except Christmas** (1957, 40 min.)

A chronological account of the way flowers and produce arrive, are displayed and sold at London's Covent Garden Market which closes only one day a year.

**Thursday's Children** (1953, 20 min.)

The limitations of primitive sound

equipment are turned into aesthetic assets as sound and silence are interwoven to involve the viewer in the world of a classroom for the deaf. Directed by Lindsay Anderson.

\*\*\*

**Oct. 13**

**Happy Mother's Day** (1964, 26 min.)

Documents, in cinema-verite style, how Mary Ann Fischer, a quiet housewife and mother, is suddenly swept up in a whirlwind of commercial, civic and media exploitation after she gives birth to quintuplets. (Two versions: original and edited for TV).

**Crisis: Behind a Presidential Commitment** (1963, 58 min.)

Looks inside the White House with President John F. Kennedy and Attorney General Robert Kennedy as they confront Governor George Wallace over the integration of the University of Alabama.

## Construction continued from page 1

eighteen state agencies involved in key environmental issues as well as TAMU-CC programs such as the Center for Coastal Studies, the National Spill Control School, the Water Supply Center, the Bioremediation Research Institute and the Environmental Research Consortium. An architect is at work on the plans.

**University Support Services Facility**

**Projected completion: early 1996**  
**Approximate cost: \$3 million**

This will be a centralized location for the University's administrative and support services. A program of requirements is currently being developed and architects will be selected in early spring.

**Vehicular/Pedestrian Infrastructure Project**

**Projected completion: fall 1994**  
**Approximate cost: \$2.975 million**

The project includes the addition of 1500 new parking spaces, construction of security kiosks, sidewalk and road improvements, landscaping and new campus signs.

**Library Automation**

**Projected completion: August 1994**  
**Approximate cost: \$650,000**

Five proposals for automation of the library are currently under evaluation. A contract will be awarded in December, 1993.

**University Center**  
**Status: Seeking funds**

A funding campaign is underway to build a multi-purpose University Center which will ultimately house an executive training center, food vendors, a mini-mall concourse and student housing accommodations. It will serve as a central gathering point for the student body.

**Other Projects**

In addition to new buildings, several existing TAMU-CC facilities will undergo renovation. Much of the renovation work centers on laying fiber optic cabling to upgrade audio-visual and telecommunication capabilities around the campus.

Additionally, the ground work is enabling the University to install the campus centralized cooling system which ties into the new Central Utilities Plant. According to George Antone, the chilled/hot water distribution system is almost completed. "The contractors on this project will now start cleaning up the disturbed areas and restoring them to their original status," he said.

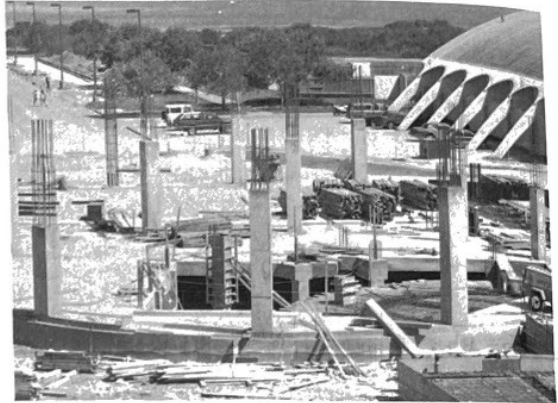
Anticipated completion date for the majority of the following renovations is August 1994.

Facilities which will be upgraded for better space utilization are the Center for the Arts (\$200,000); Corpus Christi Hall (\$525,000); Center for the Sciences (\$300,000); Classroom East (\$150,000); and the Faculty Center (\$150,000), which is also receiving new windows and is

nearing completion. Renovation on Scabreze Hall (\$300,000) to reconfigure the facility as swing space for new faculty and staff prior to the completion of the CLOC and the University Support Services Facility.

The Administration Building (\$200,000) will be reconfigured into a centralized student services center. (Administrative offices will eventually be moved to the north end of Corpus Christi Hall and the new Support Services building.)

The Moody Sustainers Field House (\$500,000) will receive additional classrooms, enlarged locker rooms and a refurbished gym floor. New tennis courts will be constructed for approximately \$100,000 to replace the courts lost to construction of the CLOC.



**Construction Update**-The new feature in the Island University News will keep the campus community apprised of current construction activity. Pictured above is the Classroom/Laboratory Office Complex under construction between the Center for the Sciences and the Faculty Center.

## Student paper hires staff

The monthly student newspaper, *Island Waves*, which premiered during the Spring 1993 semester with a volunteer staff and student submissions, now has a paid, part-time editor, advertising representative and reporter.

Ed Glaze III has accepted the position of editor, Trish Ramsey is the ad rep and Al Torres is the *Waves* reporter. John Stalmach, director of publications for Texas A&M University-Corpus Christi, is the staff advisor. The student newspaper operates under the auspices of the Office of Student Life, directed by Sara Winston.

The first Fall '93 issue is expected to hit the stands in mid-October. To ensure that a wide representation of student interests are reflected in the newspaper, Glaze said he hopes students from all majors will participate in producing the *Island Waves*. Students are encouraged to submit whatever writings, club news, upcoming events or ideas they think might be of interest to others on campus.

"Let your voice be heard on the island by submitting to the student newspaper," Glaze suggests. "It offers students an outlet to express their views and concerns and provides them with a wide range of

information. It can also serve as a forum for important topics on campus."

Volunteers are needed to help the part-time staff with various journalistic and communication activities such as writing, reporting, editing, page layout, administration and advertising. According to Glaze, student submissions are needed because there is currently no curriculum support for print communication.

Submissions can be dropped off at the Student Life Office in Glasscock Memorial Student Center (GMSC). Opinion pieces and letters to the editor should be kept to under 400 words and must include the name and phone number of the author.

Creative work such as poetry (24 lines or less), drawings, puzzles and photographs will be considered for publication. The "Seagull Droppings" column is an anonymous collection of one-liners to which anyone can contribute. Also needed are the names of students, faculty and staff that are worthy of special recognition for their achievements, outstanding or otherwise.

For more information contact the Student Life Office, Rm. 130, GMSC.

## Career Fair Scheduled October 14

### On-campus interviews help land jobs

Although it may seem like school will never end, even the heroes of the comic strip *Doonesbury* graduated from college eventually. And if you're like most graduates these days, you need all the help you can get finding a job. If so, make plans to drop by the Field House and attend the Career Planning and Placement Center's (CPPC) Sixth Annual Career Fair on Thursday, October 14, from 9:30 to 11:45 a.m. and again from 1:00 to 3:30 p.m.

According to Mary McNair, CPPC's interim director, over 50 organizations have signed up for this year's Career Fair, seeking a diverse range of students. Companies attending include: Amoco Productions Co.; Army & Air Force Exchange Service; Bay Area Medical Center; Corpus Christi State School; E-Z Serve Petroleum and Marketing Co.; Famous Footwear; Federal Aviation Administration; Fraklin Life Insurance Co.; Hous-

ton Police Department; Los Angeles College of Chiropractic; Spohn Hospital; US Army Nurse Corps; and Waddell & Reed Inc.

Students do not have to complete a placement file with CPPC before attending the Fair, said McNair, "...but they should bring several copies of their resumes, because they are good tools to get students' names in front of the employers."

McNair also offered advice on dressing for success at the Career Fair. "A student doesn't necessarily have to be dressed for a formal interview, but he or she should not come in too casual attire. Sometimes, in South Texas, we tend to be more casual than some of the recruiters are used to."

Besides the Career Fair, CPPC has scheduled on-campus interviews with various employers to help students land their dream jobs. To participate, students must complete a placement file with the CPPC office

and sign up 48 hours before the interview time. "The interviews are scheduled on a first-come, first-served basis," McNair explained, "so it's important to sign up early."

Amoco will be on campus October 5 interviewing computer science/computer information systems majors; HEB will interview business and liberal arts majors on October 6; the United States Automobile Association (USAA) will interview computer science/computer information systems majors October 7; and the US Comptroller of the Currency will be interviewing accounting majors for one permanent position and one intern position on October 21. San Antonio I.S.D. and Army/Air Force Exchange Services are both scheduled to interview on campus in November.

For a full list of companies attending the Career Fair and interviewing on-campus, stop by the CPPC office in GMSC, Room 100.





*Puente la Reina, Spain, is one of the black and white photos featured in Santiago, Saint of Two Worlds at the Weil Gallery, Center for the Arts. The exhibit will be on display from Oct. 15 through Nov. 15.*

## SAC constitution ratified

The proposed constitution and bylaws for the Texas A&M University-Corpus Christi Staff Advisory Council (SAC) were ratified by a landslide in a campus-wide election held September 29-30. SAC will represent all benefits-eligible employees of the University.

The election had a 36% turnout of the SAC constituency. Of those voting 98% (90 people) voted for the ratification of the

constitution and bylaws; there were 2 votes cast against ratification.

Gloria Weathers, director of Human Resources and chair of the Ad Hoc Staff Advisory Council, said, "The next step is to formulate an election procedure and hold elections for the actual council." Weathers said she expects the council seats to be filled and the body to be active by January 1994.

## Weil Gallery presents historical photo display by Joan Myers

The exhibit *Santiago, Saint of Two Worlds* by noted New Mexico photographer Joan Myers will open in the Weil Gallery Friday evening, October 15, at a 7-9 p.m. reception. The show will remain on display through November 15.

*Santiago, Saint of Two Worlds* is a photo exhibition documenting the historical and cross-cultural veneration of St. James (Santiago) in the Old and New Worlds. The exploits of Santiago, real or in folklore, have been celebrated in Spain, the United States and the Caribbean for centuries.

The display offers a series of evocative images of the time-hallowed pilgrimage route across northern Spain to the ancient shrine of St. James, Santiago de Compostela, showing both the landscape and the details of architecture and sculpture along the way. Myers also includes photographs showing Santiago as he is depicted in New World sculpture, painting, crafts, and ritual; the artist traveled to Puerto Rico, Peru, Haiti, Mexico and New Mexico for these portrayals.

*Santiago, Saint of Two Worlds* was originally produced by the Albuquerque Museum as part of the Columbus Quincentenary. It includes 41 large format platinum-palladium prints with interpretive text panels. (The platinum-palladium process was developed early in

the history of photography; due to its difficulty, this method of printing is seldom practiced today.) Myers used a 4x5 view camera to record the fine detail of land and architecture.

On exhibit for one month,

*Santiago, Saint of Two Worlds* can be viewed in the Weil Gallery located in the Center for the Arts. Hours are: Monday, Wednesday and Thursday 10 a.m.-4 p.m.; Tuesday 10 a.m.-7 p.m.; Friday 10 a.m.-3 p.m.; closed weekends.

## Discussion on NAFTA opens Environmental seminar series

A panel discussion on "NAFTA-Environmental Implications" will open this year's free seminar series on "Environmental and Conservation Issues of the 90's" on Monday, Oct. 18 at 7:30 p.m. in Richardson Auditorium on the Del Mar College campus.

The 1993-94 seminar series is co-sponsored by the Rob and Bessie Welder Wildlife Foundation and the Environmental Science programs of Texas A&M University-Corpus Christi (TAMU-CC) and Del Mar College.

The first of the six-part seminar series features panelists Susan Rieff, State of Texas environmental policy director with the Office of the Governor, and Dr. Pete Emerson, senior economist with the Environmental Defense Fund. Moderator for the discussion will be State Representative Vilma Luna. Environmental, economic and political factors which

influence the final fate of the North American Trade Agreement (NAFTA) will be discussed.

As Director of the Environmental Policy Council, Rieff serves as Governor Ann Richards's key advisor on environmental and natural resource issues. Emerson has been with the Environmental Defense Fund in Austin since 1991 and also serves as a consultant to various groups on natural resources, rural development and agriculture.

Representative Luna has served District 33 since May, 1993 and currently serves on the Public Safety and Elections committees of the House.

The six-part seminar series will continue through April, 1994, focusing on various environmental issues concerning the decade of the nineties and beyond.

All seminars are free and open to the public.

## Poll for new bus route taken

Do you live in the Northwest area of Corpus Christi or in Robstown? Are you tired of driving yourself to Texas A&M University-Corpus Christi every day? If so, TAMU-CC student Frances Paim Moore would like to hear from you.

Moore spoke with the Regional Transit Authority (RTA) about instituting an express bus service from the Northwest area directly to TAMU-CC. The existing service, said Moore, takes much longer and involves a bus change downtown near City Hall.

The RTA would consider alternate services, said Moore, but needs to know the potential ridership. The two options Moore discussed with the RTA were a special University Express bus with 35-40 people needed for each trip, and a "van pool" in

which participants pay a monthly fee and one participant rides free in exchange for driving the van.

Moore encourages interested students to call her and leave a message

at 241-3031. "If students will call me and leave their names and numbers, I'll call them back to discuss this. We'll find a better way to travel to school."

## Outdoor jazz concerts planned for Oct./Dec.

Jazz, fresh air, garden greenery and pizza are all on the menu for the "Jazz in the Garden" series which will take place on two Wednesday evenings this fall, October 20 and December 1 from 6 to 7 p.m. in the Glasscock Memorial Student Center (GMSC) garden area.

Big Band jazz from the 1930s to

modern day will be the main musical course, with pizza for sale as the gastronomical offering.

The new twenty-piece TAMU-CC Jazz Ensemble, under the direction of Assistant Professor of Music Dr. Allan Kaplan, will offer the concerts as part of their mid-term and final exams; the ensemble is part of a formal course offering, MUS 361, which is open to all members of the campus community. Kaplan's "History of Jazz" class, MUS 490, will also benefit from the live program as part of their curriculum.

The scheduled performances are in keeping with Dr. Kaplan's philosophy of bringing concerts to the campus in informal settings for the enjoyment of all. For the past two summers he has organized a series of well-attended "Jazz at Noon" concerts in the Faculty Center atrium.

The "Jazz in the Garden" programs are free and open to the public.



**Promoting Reading-** Stephanie Shipman (right), treasurer of the Texas A&M University-Corpus Christi Student Reading Association (SRA), checks the reservation list as Sarah Merritt, SRA co-sponsor, signs in for the organization's annual kick-off luncheon held at the Blucher Institute on Sept. 18. Kathleen Jongsma, Texas SRA president from San Antonio, spoke to 45 participants about "Portfolios." Promoting literacy through reading is the purpose of the SRA. The next meeting will take place on Oct. 23 with guest speaker Nelda Hensley whose topic will be "POWER: Parents are Outstanding When They Encourage Reading." For more information about the SRA call Kathy Wells at 937-7434.

## Et cetera

### Early Mobile Voting On Campus

TAMU-CC has been chosen as a Mobile Early Voting site for the upcoming Nueces County/City of Corpus Christi Joint Special Election. The voting booths will be on campus Thursday, Oct. 21 and Wednesday, Oct. 27 from 7:30 a.m. to 1 p.m. and again from 5 p.m. to 7 p.m. in the Student Center.

To be eligible to vote, one must be a registered voter of Nueces Coun-

ty. The deadline for voter registration for this election was Oct. 3.

### Student Teacher Applications Due

Education students who want to be placed for student teaching in the Spring must complete an application by October 15. Applications are available from the Office of Field Experience, Faculty Center Room 204. For more information, contact Teresa Davis at 994-2669.

## PLEASE NOTE:

Letters to the editor are published as submitted to the *Island University News* and should not exceed 400 words.

All letters must be signed, dated and accompanied by a telephone number where the writer can be contacted.

## Recreational Sports Roundup

Mark your calendars now for Timex Fitness Week, Oct. 18-22. TAMU-CC will sponsor several fitness and wellness events as part of the week, including a "Jump Rope for Heart" on Wednesday, Oct. 20, 3-5 p.m., and the "World's Largest Aerobics Class," taking place on 300 college campuses simultaneously, on Thursday, Oct. 21, 3:30-4:30 p.m. Check the next issue of the *Island University News* for more information on Timex Fitness Week.

The following programs are open to TAMU-CC students, faculty and staff. Current registration deadlines are listed. For more information, contact Ann DeGaiush at the Field House, Room 114, 994-2454.

Field House hours are: Monday-Friday, 8 a.m.-10 p.m.; Saturday & Sunday, 9 a.m.-6 p.m. Facilities are available for informal use when not being used by a class or scheduled event. For racquetball court reservations, call 994-2313.

### University Pool

Open daily, noon-6 p.m., subject to weather conditions. Usually open until late October depending on water temperature and daylight hours.

### 3 Pitch Softball Tournament

Register: Thru Oct. 6  
Play: Oct. 8-9

Ten-player teams from TAMU-CC and Del Mar College play dou-

ble elimination tournament schedule. Three chances to get legal hit from own teammate pitcher.

### Volleyball Triples

Register: Oct. 11-19  
Play: Tuesdays beginning Oct. 26, 3:30-5:30 p.m.; Field House

Each three-member team will play a round robin league format with single elimination playoffs. Divisions: Men and co-rec. (Co-rec teams must have a minimum of one male and one female on the court at all times.)

### Racquetball

Register: Oct. 18-27  
Play: Begins Nov. 1

Individuals assigned opponents in a single elimination tournament. Participants must play by the scheduled assignment date. Divisions: Men & Women. Levels: Beginner, Intermediate and Advanced.

### Pickleball

Register: Oct. 18-27  
Play: Thursdays beginning Oct. 28, 3:30-5 p.m.; Field House

Combines the skills of badminton and tennis in a fast-paced game using a wooden paddle and a whiffle ball. Divisions: Men & Women. Format: round robin singles.

### 3 on 3 Basketball

Register: Oct. 18-27  
Play: Wednesdays beginning Nov. 3, 3-5 p.m.; Del Mar College

League open to TAMU-CC and Del Mar students. Teams play in a round robin league with single elimination playoffs. Captain's meeting at Del Mar on Wed., Oct. 27 at 3 p.m.

### Prediction Run/Walk

Event: Monday, Oct. 18, 5:30 p.m.

Part of Timex Fitness Week. To win, you don't have to be the first to run 2 miles or walk 1.5 miles, you just have to finish closest to your predicted time. First place male & female will receive Timex watches.

### Weight Lifting Contest

Event: Tuesday, October 19, 11 a.m.-1 p.m.

Contestants will compete in men's and women's divisions in different weight classes.

### Lifecycle Challenge

Event: Tuesday, Oct. 19, Time TBA

Participants will "race" exercise bikes.

### Football Frenzy

Register: Weekly

Each Monday participants pick winners of weekly NFL Football games. Correct picks awarded points. Most accumulated points wins T-shirt.

### Movers, Shakers & Motivators

Activity: Through Dec. 10

Individuals earn points for par-

ticipating in aerobic activities: walking, running, swimming, cycling and aerobics. Participants receive awards at 100 points.

### Drop-In Volleyball

Play: Thursdays through Dec. 9, 7-9 p.m.; Field House

Informal, all levels welcome. Open to students, faculty/staff and spouses.

### Noon Walkers

Activity: Mondays & Wednesdays through Dec. 8, 12:00 noon; Field House

Outdoor/indoor (when too hot or humid) supervised walking fitness program. Good pair of sneakers required. As part of Timex Fitness Week, body fat testing will be available to any participant, old or new, who walks on Monday, Oct. 18.

### Combat the Fat!

Activity: Tuesdays through Dec. 8, 4:30-5:30 p.m.; Recreational Sports Office, Field House

Fitness testing; information on exercise programs, nutrition and weight loss.

## Financial Assistance Corner

Financial Aid deadline for the Spring 1994 Semester is **October 15**. For more information, stop by the Office of Student Financial Assistance in the Administration Build-

ing. Hours are Monday, Wednesday and Thursday, 8:00 a.m. to 5:00 p.m.; Tuesday, 8:00 a.m. to 7:00 p.m.; and Friday, 8:00 a.m. to 3:00 p.m. Call 994-2338.

## University Theatre opens season with Hellman's *The Little Foxes*

University Theatre opens its 1993-94 season with the modern American classic drama, *The Little Foxes* by Lillian Hellman, on October 14 at 8 p.m. for eight performances in Warren Theatre, Center for the Arts. Other 8 p.m. performances are October 15-16 and 21-23. There will be two Sunday matinee performances at 2 p.m. October 17 and 24. The production is being directed by James W. Carlsen, professor and director of University Theatre. For ticket information, call the University Theatre Box Office at 994-5800.

Set in a small Southern town, Spring, 1900, this play depicts the predatory Hubbard family - "the little foxes" of the *Song of Solomon* (2:15), "that spoil the vineyards." This well-made play contains richly developed characters motivated by an evil lust for greed and control. The most vicious of the burgeoning Southern-industrialist family is Regina, memorably portrayed by Tallulah Bankhead in a long run on Broadway, and by Bette Davis in the 1941 film version.

The cast of actors and characters is as follows: Rachel Dempsey as Addie, Robert

Anderson as Cal, Kelly Grochow as Birdie Hubbard, Trey Mikolasky as Oscar Hubbard, Douglas C. Holcomb as Leo Hubbard, Margo Rogers as Regina Giddens, David Grover as William Marshall, David Martin as Benjamin Hubbard, Jency Merkle as Alexandra Giddens and Chuck Poling as Horace Giddens.

General admission is \$5. Advance tickets may be purchased in the Center for the Arts Office (Room 107) on Monday, Wednesday, Thursday from 8:30 a.m. to 5:00 p.m.; Tuesday from 8:30 a.m. to 7:00 p.m.; and Friday from 8:30 a.m. to 3:00 p.m. The Box Office opens for the sale of tickets at 6:30 p.m. for evening performances and 12:30 p.m. for matinee performances. Patrons are advised to pick up their tickets for general seating 30 minutes before curtain. Any tickets or seats not redeemed by curtain may be sold to waiting list customers.

All TAMU-CC students, faculty and staff may receive one free ticket to see the production upon the presentation of a current ID.

\*\*\*\*

## Professional Notes

**Dr. Ruth Bakke** has decided to resign as dean of the College of Science & Technology effective Aug. 31, 1994, and return to her position as tenured Professor of Nursing. Bakke will complete her fifteenth year as dean at the end of this academic year. "During her tenure, Bakke presided over significant changes in the College, its composition and its academic programs. As a result of her leadership, the College of Science & Technology has attracted faculty members who are the envy of other institutions and has achieved a position of prominence

not only in Texas but throughout the nation," said Provost and Vice President for Academic Affairs Dr. Tito Guerrero III in a memo to the University community.

A training seminar in sales and customer service for directors of American and international corporations will feature materials developed by TAMU-CC's **Dr. Darwin Nelson**, director of counseling services. Nelson has been invited to the seminar, which runs from Oct. 11 to 14.

\*\*\*

## Calendar

Liberal Arts majors, 9 a.m.-5 p.m., CPPC located in GMSC. Placement file must be completed.

### October 8

Toastmaster's Speech Contest: CS 101, 6:30-10 p.m. Call University Outreach, 994-5746.

### October 9

GRE (Graduate Record Exam): CCH 215, 8:30 a.m.-1 p.m. Call Sylvia Rangel, Office of Admissions, 994-2625.

### October 11-15

Eating Healthy Week: Contact Health Services, Sharon Alexander 994-2601.

### October 13

University Cinema: CCH 117, 7:30 p.m. *Happy Mother's Day* (original and edited for TV versions) and *Crisis: Behind a Presidential Commitment*.

### October 14

Sixth Annual Career Fair: Field House, 9:30 a.m.-11:45 a.m. and

1-3:30 p.m. Business, health care and government agencies represented. Participant listings available at the Career Planning and Placement Center, GMSC.

### October 14-17

University Theatre: *The Little Foxes*, by Lillian Hellman, Warren Theatre. Performances: Oct. 14, 15 and 16, 8 p.m. Sunday matinee, Oct. 17, 2 p.m. Tickets: \$5. Box office number, 994-5800.

### October 15

*Santiago, Saint of Two Worlds*: A photo essay by Joan Myers, Weil Gallery. Opening Reception, 7-9 p.m. On exhibit through Nov. 15. Deadline: Financial Aid, Spring 1994.

Deadline: Student Teaching, Spring '94 Placement. Call 994-2669.

### October 16

GMAT (Graduate Management Admission Test): CCH 215, 8:30 a.m.-1 p.m. Call Sylvia Rangel, Office of Admissions, 994-2625.

### Election can't from page 1

tors are Jim Bates, Jerry Guzman and Katherine McBride.

Four positions were open in the College of Science and Technology. Three candidates made it on the ballot and subsequently were voted into office: Leonid "Lee" Ellis, Royce Fromme and Lori Lohmann. There is a four-way tie for the fourth seat between Tamara Teas, Lyle Johnston, Todd Tenbrink and Eric Yeager.

Decisions on all ties will be addressed by student government representatives at the Oct. 6 meeting.

**Continuing**  
Through Oct. 7, *Selections from Face Faced Facing: Sara Waters* exhibit in Weil Gallery.

### October 6

University Cinema: CCH 117, 7:30 p.m. Three documentaries: *Let There Be Light*, *Thursday's Children* and *Every Day Except Christmas*.

Job Interviews: Store Management Trainees for H.E.B., Business and

'94 COUNTDOWN:

**327**

days to first class day of four-year status

The *Island University News* of Texas A&M University-Corpus Christi is published by the Public Information Office (PIO) biweekly during the long semesters and monthly in the summer.

News items, classified ads and letters-to-the-editor may be submitted to the PIO in the Administration Building, or mailed to: *Island University News*, Public Information Office, Texas A&M University-Corpus Christi, 6300 Ocean Dr., Corpus Christi, TX 78412. Deadline for submissions is noon the Tuesday prior to publication. Letters-to-the-editor must be signed and include author's current phone number. Commercial advertising is not accepted.

Editor ..... Mary McQueen, Interim Director of Public Affairs  
Production Editor ..... John Stalmach, Director of Publications  
Reporter ..... Evette Babich, Public Affairs Assistant  
Photographer ..... Javier Fonseca, Photographer II  
Production Assistant ..... Cherry Deyo, Graphic Artist  
Student Writer ..... Timothy Schmelter  
Circulation Manager ..... Ruth Lara, Secretary II  
Circulation Assistant ..... Corinna Garcia