

Island University News

Texas A&M University-Corpus Christi

February 3, 1994

Volume 21, Number 9

Library Renovations to be complete this summer

The plan to automate the University Library at TAMU-CC is on track according to Don Buchwald, coordinator of reference services for the library. The \$650,000 project is expected to be complete "when the first freshmen walk in the door," Buchwald said.

The contract has not been awarded as of this date, but Buchwald says the automation committee has it narrowed down to three contenders. The selection should be made by the end of January or the beginning of February. TAMU-CC's decision will then be reviewed by the Department of Information Resources at the state level.

To oversee this evolution into automation, the University has brought on automation librarian, Bonnie McNeely. Dr. Tom Kreneck, interim director of the library, has referred to McNeely as "one of the leading automation librarians in the state."

Kreneck also added, "Her coming to the library is very crucial to the success of the automation program."

McNeely has been a librarian for 12 years with the last eight years devoted to automation. She helped both the Texas Woman's University and Morehead State University (in Kentucky) libraries make the switch to automation. She holds a bachelor's degree from the University of Texas at Arlington, a library science degree from the University of North Texas and is presently working on her doctorate at Texas Woman's University.

McNeely said the new automation will make the card catalog obsolete. Computers installed in the library will tell the user if the book is in the library's collection and if it has been checked out. If the book has been checked out the computer will let the student know when the book is due back. Books will be equipped with a bar code for identification and check out. The person's TAMU-CC identification card will also have a bar code and be used in the check-out process through a computer link with the registrar's office.

According to McNeely, the computer system will also allow the user to do a keyword search in addition to the traditional author, title and sub-

ject search. Training sessions will be offered to the University community based on demand for such a resource. McNeely said the top two choices are equipped with very easy-to-follow menu instructions that lead the user through the program. McNeely said each of the top three contenders for the contract had their differences, but were all user friendly.

The computer will also be used for all acquisition, circulation and cataloging information. When a periodical is received in the library, the staff will record it on the system. McNeely said the computer will also let the library staff know what peri-

odicals they have not received. The same information will be available to computers interfacing with TAMU-CC's local area network. This will give faculty and staff book information from their office computer terminals.

Plans are underway to give TAMU-CC students, faculty and staff access to the databases at Texas A&M University-College Station, that allows the user to search other libraries without the hassle of learning an entirely new command system is being discussed. This software would allow the user at TAMU-CC to use familiar university codes.

Student Services Hours

Computer Lab
Monday - Thursday 8:00 a.m. - 10:00 p.m.
Friday 8:00 a.m. - 5:00 p.m.
Saturday 1:00 p.m. - 5:00 p.m.
Sunday 2:00 p.m. - 5:00 p.m.

University Library
Monday - Thursday 7:30 a.m. - 10:00 p.m.
Friday 7:30 a.m. - 5:00 p.m.
Saturday 1:00 p.m. - 5:00 p.m.
Sunday 2:00 p.m. - 10:00 p.m.

Special Collections & Archives
Hours will be posted

The Personal Skills Center
GMS 138

Assists in areas such as time management, stress reduction and test taking skills.
Open 8:00 a.m. - 3:00 p.m., Mon - Thurs.

Accounting Lab
CE 114
Mon - Thurs 9:30 a.m. - 2:30 p.m.

Math Lab
Library 220
Tues & Thurs 11 a.m. - 1 p.m.
Mon - Thurs 3 p.m. - 5 p.m.

Writing Center
CA 201
Tues, Weds & Thurs
10:00 a.m. - 2:00 p.m.

Security officers will provide information for campus visitors and new students

The Texas A&M University-Corpus Christi Police recently hired three security officers to monitor both entrances of the campus and provide information to visitors. According to Police Chief Kent Butler, "Supplying information at the entrances will be their primary role."

Construction of entry kiosks is scheduled to begin in March. During the interim, security officers will work out of vehicles at the future kiosk locations. The vehicles have signage identifying them as an information source. "The persons at these locations will have campus maps available and be able to give directions," said Butler. He adds visitors will still have to go to the University Police Station to obtain temporary parking permits.

The security officers will be operating at their work stations during weekdays on a 24-hour basis.

Early Childhood Development Center to be dynamic resource for South Texas

"It's going to be one of a kind," says TAMU-CC's Dean of the College of Education Dr. Robert Cox of the Early Childhood Development Center. Architectural plans for the center are expected to begin this summer and construction to begin next summer.

"There are parts of this building everywhere, but nowhere is it all located at one facility," Cox says. "I wish it was here now." He adds, "The various centers within the building all will be directly connected to academic programs within the university."

The Early Childhood Development Center will actually be several interconnected centers housed in the same building. These elements are: a School Center, a Theme Center, a

Staff Development Center, a Resource Center, a Diagnostic and Personalized Education Center, a Counseling Center, a Health Center and a Motor Development Center.

The School Center will be an actual pre-school on the campus for approximately 240 children three years of age to third grade. They will be taught by "hand-picked" teachers. "Our initial plans are for this to be a year-round school with a dual language emphasis," he says. "Children selected to attend the School Center will be chosen on a random basis from a volunteer pool of those interested. Those attending will learn Spanish and English language skills. "Our objective is for the children to be proficient in both languages when they leave here."

Features of the School Center will include high-level instructional technology, multi-age groupings, team teaching and integrated curriculum. Every effort will be made to obtain the latest in educational technology and software.

Other functions of the School Center include serving as a clinical

site for TAMU-CC students, a generator of research and to be an example or demonstration site of successful teaching methods for the Coastal Bend.

The Theme Center, like the School Center, will have school children learning on a college campus and taught by master teachers employed by the center. The Theme Center will focus on students in grades 4 through 8. The themes and disciplines taught will change from week to week, as will the students and teachers attending. "University teachers, university students, persons in work study programs and graduate students will also be helping at the Theme Center," says Cox. It is anticipated 4,000 to 5,000 students and 300 area teachers of the grade 4-8 group will use the Theme Center each year.

The School and Theme centers coincide with TAMU-CC's ongoing effort to become more integrated with the community. "These centers will pull the community in here. These younger students will be excited," says Cox. See "ECDC" on page 2

From the beginning... Teacher Resource Center evolves

The Early Childhood Development Center will be a prominent asset to Texas A&M University-Corpus Christi and South Texas as an innovative hub for teaching and education. Its emergence as a major player in the university's future can be traced back to 1977 when a Texas Department of Human Services grant funded the establishment of a Teacher Resource Center.

"It was created for the purpose of educating teachers and day care workers in early childhood education," says Professor of Education Dr. Jane Wilhour who has overseen the center and helped it evolve since its beginning.

The Texas Department of Human Services funded the Teacher

Resource Center for three years. "After that the school continued to fund the center as a resource for undergraduates and graduates in the College of Education," says Wilhour.

She continues, "After 1980, the center expanded its role to provide resources and materials for elementary and middle school teachers and prospective teachers." This role expansion continued as the center also became known as a site for staff development training for public and private school teachers in South Texas and throughout the state. Wilhour recalls, "School districts have bussed teachers here from Amarillo to work here for a week. We've had teachers flown in from El Paso. On a continuing basis, we've had teachers from Houston and Austin."

Administrators were not idle as the center's function grew. In 1979, the College of Education Faculty Committee was convened to develop a proposal for an Early Childhood Center on the campus. "That proposal was improved on three occasions between 1982 and 1992 to eventually develop the Early Childhood Development Center," says Wilhour.

She credits TAMU-CC President Dr. Robert Furgason for his leadership in securing the funding for the center through the State Legislature in the spring of 1993.

Wilhour notes, "The Teacher Resource Center has been used extensively by university students and public and private teachers. We have approximately 6,000 educators each year using the center."

With the Teacher Resource Center becoming a part of the complex to be known as the Early Childhood Development Center, she emphatically states, "After all these years it's finally coming to fruition."



Need directions? TAMU-CC security officers are now located at both campus entrances to serve as information sources. Permanent security/information kiosks will be constructed and be ready by the fall semester.



Dr. Sylvester Peterson addresses leaders of non-profit and other organizations during a grants seminar Jan. 14.

Grant writing seminar held

Approximately 65 persons attended the Jan. 14 seminar at the Center for the Sciences. "Writing a Successful Grant Proposal," a cooperative presentation by the Volunteer Center Management Assistance Program and TAMU-CC. While the number of participants made this event successful, the quality of those in attendance had organizers even more pleased.

"We want to project Texas A&M University-Corpus Christi as a resource information center," said Vice President for Institutional Advancement Ken DeDominicis. "This is part of our outreach into the community. Seminars and programs like this are part of what this university is about."

"Because we have a good rela-

tionship with the university, we have the opportunity to use the facilities and their expertise," explained Georgia Wisniewski, Management Assistance Program coordinator for the Volunteer Center of the Coastal Bend.

Making presentations at the seminar were TAMU-CC's Director of Grants Dr. Sylvester L. Peterson, Library Collections Supervisor David A. Moinette and Mari Brennan-Barrera of the Blucher Institute.

Among the participants were representatives of the City of Corpus Christi and other area municipalities, area emergency medical service personnel, the Corpus Christi Independent School District and other area ISDs, human services groups, hospitals and health organizations, museums and senior citizen groups.

TAMU-CC students impressed with dynamics of Agriculture Summit

"We can't believe they have never had this before," says TAMU-CC mariculture graduate student Jeff Kaiser of last October's Texas Agricultural Summit. Kaiser and Mike Chambers, also a mariculture graduate student here, were designated representatives of TAMU-CC to attend the summit. The theme of the two-day event was "Setting a Course for the 21st Century."

The pair were equally impressed with the content, speaker/facilitators, and method in which the event was conducted.

Keynote speaker Whitney MacMillian, chairman of the board of Cargill International, outlined the impact of the recently approved North American Free Trade Agreement and noted, "poverty is a worse detriment to the environment than big business." He also highlighted today's \$3 trillion world trade market.

Both Chambers and Kaiser recall Amy Barr, of the Good Housekeeping Institute, making a strong impression. "She used humor, statistics and stories from the magazine (*Good Housekeeping*) on consumer trends in food." Apparently, consumer preferences are accelerating toward "cheap, nutritious, fast food."

Other speakers included Fernando Gomez-Gonzalez of McDonald's International on world markets, David Braun of the Texas Nature Conservancy on environmental issues, Speaker of the Texas House of Representatives Pete Laney on agriculture leadership, Ken Cook, president of Environmental Working Group of Washington D.C., Texas Agriculture Commissioner Rick Perry, Charles Stenholm of the U.S. House Agriculture Committee, U.S. Representative Kick de la Garza and Herminio Blanco, chief Negotiator of the Ministry of Commerce and Industrial Promotion for Mexico.

Also during the first day, all participants joined issue work groups. Chambers participated with the "World Markets for Food, Fiber and Agricultural Products" group facilitated by Mark Ellison of the Texas Department of Agriculture. "Much of our discussion was on NAFTA," says Chambers. "There was a lot of arguing among farmers about whether or not we could profit from it. Most of the people there were for NAFTA; those that were not were very vocal about it."

Discourse, heated or otherwise,

was encouraged at the summit. "This put people together," says Kaiser. "You had the big guy sitting next to the little guy. It was face to face. They wanted to hear from everybody." Chambers adds, "Anybody could get up and speak. They wanted to get it all in the open."

Kaiser joined the "Technology Development and Transfer" group under the guidance of Art Brooks of Frito Lay. "We looked at the need for a more fluid process in what comes out of research and development being put into practice and use," recalls Kaiser.

Twice during the seminar, surveys were taken among the participants with questions on the content of the summit. The survey results were tabulated on Scantron and released prior to the close of the event.

Mariculture was not among the issues and topics discussed; however, the information obtained during the summit was beneficial.

"There was a lot of discussion on agriculture trends," says Chambers. "Hopefully, aquaculture will be incorporated in future meetings. Aquaculture outside the U.S. is huge."

ECDC continued from page 1

posed to a university atmosphere while they are here," Cox says.

The Resource Center will be an expanded version of the Teacher Resource Center currently located in Corpus Christi Hall. It will serve

as a lending library for instructional materials and software and a demonstration/experiment site. This portion of the Early Childhood Development Center will also work as a versatile staff development center where area schools can bring in staff for programs and seminars, school boards can hold conferences and classes can be held. It is hoped the Resource Center will be open 14 hours a day. "It will be open to the public," he says.

The Diagnostic and Personalized Education Center will perform as an individual assessment and prescription service for area school children in reading, math, special education, language and physiological and psychological areas. "There will also be a counseling center for the kids in our School Center and will be tied to our graduate program in guidance and counseling," says Cox.

The Health Center will provide the necessary health services on site for the Childhood Development Center. It will also be an undergraduate and graduate student practicum and training site for nurse practitioners. Through this center a major focus will be the development of a model nurse program.

A Motor Development facility will also be in the Center. This area will be the equivalent of an indoor gymnasium designed for the youngsters in the School Center to develop their motor skills.

The Staff Development Center will provide educational opportunities derived from the other centers for teachers and administrators, parents, community and agency representatives, university students and faculty. This particular center will

be the most diverse in its use, where all involved in education will be encouraged to participate in seminars, programs and observe the various programs in the ECDC.

"It is our hope that we can assume more of a leadership role for education in this area," he says. We don't have all the answers, but we ought to be a facilitator in finding them. We want to be a player, helper or cohort in the stage of what is being played out in education."

While funding for construction of the center has been approved, there are other fiscal challenges and obstacles to overcome. Financial sources need to be found for providing the necessary instructional technology, to pay for the Theme Center teachers and the daily operational expenses.

"We see the teachers at this center possibly being instructional technology program producers who develop instructional packages for other educators," says Cox. "We would like to reach a position where we are on the leading edge of what is happening."

"A key objective with the Early Childhood Development Center will be to showcase educational programs and instructional technology in an actual classroom setting. It is our hope that school personnel in the Coastal Bend can observe first hand new ideas and techniques and then make their own decisions about implementing them in their districts. We want to encourage area teachers, administrators and school board members to be a vital part of their educational improvement effort for South Texas children. The support of area school districts is essential."

Directory Survey for Students, Faculty and Staff

This academic year, the Office of Public Information published a TAMU-CC Student, Faculty and Staff Directory for the first time. As with any new venture, there are pros and cons, advocates and adversaries. And, as with any new venture, there are ways to make it better. We would like to know how you feel about it—what you like about the directory; what you think can be improved.

Published as a resource for the entire University, the directory was conceived as a single place where students, faculty and staff could turn for important information. It was based on models from several other universities that publish directories, such as this one, on a yearly basis. TAMU-CC used available public information for all the data published with the exception of the faculty and staff home telephone numbers and addresses. Since that information is not public, we requested these individuals provide us that information and allow us to use it in the directory.

Public information, in the case of students, includes the individuals' name, address, local address, home telephone number, local telephone number, classification and major. For more information on what constitutes public information, see page 18 of the 1993-94 University Cata-

log under "Student Records Policy."

Please help us make this service better by taking a few minutes of your time to fill out our survey. If you have any other questions or comments, contact Mary McQueen, interim public affairs director, at 994-2427.

Return the completed survey to the Office of Public Information or the Office of Student Life. Thank you for your time and feedback.

Are you a student, faculty member or staff member? _____

Do you think a comprehensive directory is a good idea? Yes _____ No _____

What do you think about:

The "About Texas A&M University-Corpus Christi" section? Useful _____ Not useful _____

The "Expertise Directory"? Useful _____ Not useful _____

The "Departmental Directory"? Useful _____ Not useful _____

The "Alphabetical Directory"? Useful _____ Not useful _____

The "Student Directory"? Useful _____ Not useful _____

Do you like having home numbers and addresses of faculty and staff available? Useful _____ Not Useful _____

What do you think about the photo section for faculty/staff? Useful _____ Not useful _____

The following questions are for students only.

What information would you like to see in the student section of future directories?

(check all that apply) Name _____ Campus address _____ Home address _____ Campus phone # _____ Home phone # _____ Classification _____ Major _____

Would you like the option of being left out of the directory completely? Yes _____ No _____

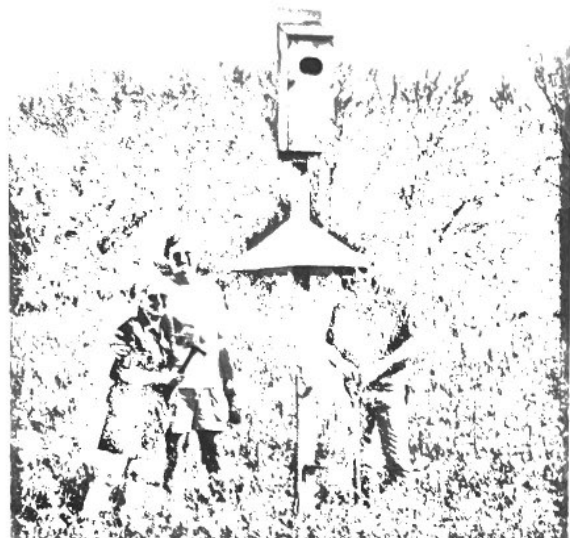
Would you like the option of leaving out only portions of your information? Yes _____ No _____

If you had the opportunity to leave out portions of the information, which would you delete? Name _____ Campus address _____ Home address _____ Campus phone # _____ Home phone # _____ Classification _____ Major _____

How would you like to exercise that option? Registration _____ Phone _____ Mail _____ Direct _____ Mail (letter or correspondence) _____ Other _____

Would you be willing to pay for this directory? Yes _____ No _____ If yes, how much? _____

Please use the rest of this space for comments, questions or concerns. _____



Habitat creation--Beta Beta Beta members recently set 3 wood duck houses on the West side of Ward Island in the tidal flats. Pictured (l to r): President Rachael Brooks, Historian Joe Hominick and Secretary Lyle Johnston.

Myers to discuss "Global Conservation" Feb. 21

World renowned authority on the environment and natural resources Dr. Norman Myers, a consultant in environment and development at Oxford, will present the program "Global Conservation," Feb. 21 at 7:30 p.m. in Richardson Auditorium at Del Mar College. This program is the fourth part of the ongoing series "Environmental and Conservation Issues of the Nineties," sponsored in part by TAMU-CC.

Since 1970 Myers has conducted research and consulted in over 90 countries in the area of the environment and natural resources with emphasis on species, gene reservoirs and tropical forests. He has served as consultant for the Rockefeller Brothers Fund, the U.S.

National Academy of Sciences, the World Bank, the Smithsonian Institution, United Nations agencies, the World Resources Institute, the U.S. National Research Council and others.

Myers hold numerous academic and extended appointments including Cornell University, University of Utrecht, University of Oxford, University of California, Stanford University. He has also authored numerous papers, articles and books. His most recent books are *The Gaia Atlas of Future Worlds: Challenge and Opportunity in an Age of Change* (1990) and *Ultimate Security: The Environmental Basis of Political Stability* (1993).

Other sponsors are the Rob and

Free Program on Correspondence Analysis is scheduled for Feb. 18

Texas A&M University-Corpus Christi is offering the program, "Use and Interpretation of Correspondence Analysis for Research," Feb. 18 from 10:30 a.m. till noon at the Blucher Institute for Surveying & Science on the TAMU-CC campus. This educational opportunity is free and open to the public.

Conducting the program will be Dr. Allen F. Ketcham and Dr. John Bonno of Texas A&M University-Kingsville and Dr. James Fugate of Texas A&M-Corpus Christi. Dr. Ketcham is professor and director of the Office of Economic Development at TAMU-Kingsville and is a former National Fellow of the Hoover Institution at Stanford University. Dr. Fugate teaches quantitative methods and has authored a book on programming. Dr. Bonno is

professor of accounting and CIS and has authored several books on computing.

Correspondence Analysis (CA) is a relatively new graphics tool for simplifying and gaining insight into complex, multivariate data, and is gaining wide acceptance for analyzing biological, environmental and health sciences data.

Health care researchers conducting attitude surveys and biologists and environmental researchers collecting complex data on the relationships between biological populations can use CA for a clearer perspective of information gathered.

The use, misuses and interpreta-

tion of CA with several actual research examples will be discussed.

This program is sponsored by the TAMU-CC Center for Statistical and Quality Improvement Services. The center is a comprehensive group of university experts working together with South Texas to continuously improve the quality of education, government, health care and business. The center seeks to achieve this objective through workshops and seminars in statistical methods, consulting and training in statistical computing and consulting and training in research design and analysis.

For more information, call Gale Ketcham at 994-5852.

Non-credit courses through the TAMU-CC Management Development Center

Business Writing--"Letters"...A great way to enhance your skills and get results from your writing. Feb. 15, 6 p.m.-9 p.m. and Feb. 22, 2 p.m.-5 p.m. Fee \$35.

Windows 3.1...Now that you have that new computer, it's time to learn all the "ins and outs" of Windows. Carol Ryan is the instructor. Feb. 1, 9 a.m.-noon and Feb. 3, 9 a.m.-noon. Fee \$75.

WordPerfect 5.2 for Windows...We have just revised our course and will be offering everything you need to know to get on your way with WordPerfect in just two courses. Come join us for Level I+; Feb. 7, 6 p.m.-9 p.m., Feb. 8, 9 a.m.-noon, Feb. 9, 6 p.m.-9 p.m. and Feb. 10, 9 a.m.-noon and Level II+; Feb. 14, 6 p.m.-9 p.m., Feb. 15, 9 a.m.-noon, Feb. 16, 6 p.m.-9 p.m. and Feb. 17, 9 a.m.-noon. Fee \$75 for each level.

Sexual Harassment in the Workplace...A hot issue that cannot be ignored. Even if you think you are aware of the issues, you may be surprised at how much you will learn. Feb. 8, 2 p.m.-4 p.m. Fee \$25.

GRE/GMAT Exam Preparation...Are you prepared for the GRE or GMAT exam? If not, this course may be your ticket to success. It's offered on consecutive Saturdays, Feb. 26 and March 5, from 9 a.m. to 4 p.m. each day. The first course will focus on math review and the second course will cover verbal review. Fee \$90.

COMING IN MARCH: Business Writing--"Proposals"...Don't let opportunities pass you by. Learn how to make proposals look good and say the right things. March 21 and 28, 6 p.m.-9 p.m. Fee \$75.

For more information call Becky Warner at 994-5900.



Dr. Norman Myers

Bessie Welder Wildlife Foundation and Del Mar College.

Professional Notes

Dr. Robert Pankey, coordinator of the Division of Kinesiology at TAMU-CC, has been appointed chair-elect with the Technology Division of the Texas Alliance of Health Physical Education Recreation and Dance Organization. The appointment is for a three year term.

According to Pankey, responsibilities of the position include developing programs in Kinesiology and Health Technologies for presentation to the TAHPERD state convention next December.

Pankey has also been selected to present a software program he developed at the National American Alliance of Health Physical Education Recreation and Dance Convention in Denver, Colorado this coming April.

Furgason appointed trustee for Texas State Aquarium

TAMU-CC President Dr. Robert Furgason was recently appointed to serve on the Texas State Aquarium Board of Trustees for 1994.

Vanessa Jackson publishes book

Dr. Vanessa Jackson, assistant professor of English, has published a book titled *The Poetry of Henry Newbolt: Patriotism Is Not Enough*.

According to Jackson, Sir Newbolt was a late Victorian and Edwardian English poet, whose poetry was enormously popular at the turn of the century, but is now either hostilely regarded, over-simplified, or totally neglected. Jackson is the great-granddaughter of Sir Newbolt.

Carroll contributes to textbook

Dr. Patrick Carroll, professor of history and chair of the Division of Humanities was a contributing author in a newly released textbook. The text, entitled *Africans in the Americas*, was edited by Michael Conniss and Thomas J. Davis and was published by St Martins Press in New York.

English professor, Mead, publishes book review

Extrapolation magazine recently published a review written by Dr. David Mead of George Slusser and Tom Shippey's novel *Fiction 2000*. The review was featured in the magazine's winter edition.

"United We Win" goes to third publication

The third edition of Ignacio Garcia's book, *United We Win*, was published this year by the University of Arizona Press. Garcia is an assistant professor of history.

Police Chief urges caution to motorcycles, cars, pedestrians

It's not all *Easy Rider*. The images of freedom and independence associated with owning a motorcycle have made it a popular mode of transportation nationwide. But, as Chief of University Police S. Kent Butler points out, riding a motorbike to school presents its own special problems.

Some years ago, the University poured several concrete slabs around the campus for motorcycle parking. The reason for the concrete spaces is simple, said Butler: "If there is a gasoline leak in a vehicle, it will destroy whatever asphalt it touches. Hot or weakened asphalt can give way under the pressure of a kickstand, spilling the bike," he explained.

Some drivers of four-wheelers perceive the concrete spaces for motorcycles, which are often located closer to campus buildings than automobile spaces, as special treatment, said Butler. "However, motorists have to understand that if

motorcycles don't have special spaces, they will take up a whole space that could be used by a much larger vehicle," he said. Currently, several motorcycles are able to park in an area equivalent to one parking space, Butler explained.

Another common complaint, says Butler, comes from the motorcyclists themselves, who are not allowed to park in the bicycle spaces or on the sidewalks. However, only TAMU-CC vehicles on University

business are allowed on the sidewalks, Butler stated.

Butler said the key to traversing the campus, whether on wheels or on foot, is caution--especially at night. "Drivers need to be alert for pedestrians, because they are difficult to see," Butler explained. "But pedestrians need to be careful also," said Butler, "because the campus construction has caused some uneven surfaces in the walkways, streets and parking lots."

February 5 GRE test canceled

The GRE test scheduled for Feb. 5 at Texas A&M University-Corpus Christi has been canceled. The next GRE test is scheduled for April 9.

The GRE is required for students seeking admission to graduate degree programs in the Colleges of Arts and Humanities,

Education and Science and Technology.

A new requirement prior to taking the GRE is a recent photograph and photo file record signed before admittance. For more information call Sylvia Rangel of the Office of Admissions at 994-2625.

Accounting students visit Maquiladora



Accounting students visit Texas A&M International University in Laredo. Accounting students and their sponsor, Paul Cameron (far right), made a stop at the southernmost campus of the system during a recent visit to the Packard Electronics plant in Nuevo Laredo.

To gain more insight on the significance of the North American Free Trade Agreement, Texas A&M University-Corpus Christi students recently visited Packard Electronics in Nuevo Laredo. The plant is a maquiladora employing approximately 2,000 Mexicans.

Making the trip were members of the Texas A&M University-Corpus Christi Student Accounting Society and the faculty sponsor, Paul Cameron, in conjunction with the International Accounting and International Finance classes.

The plant assembles automobile and truck wiring harnesses for General Motors. General Motors employs about 24,000 in all of its wiring harness plants in Mexico. The large American auto maker plans to expand its Mexican labor force, especially in the labor-intensive realm.

Helping coordinate the trip was Texas A&M International University in Laredo.

Financial Assistance Corner

Professional Secretaries Internat'l Scholarship; Amount: \$1000 Applicants must have completed at least one year towards a degree. Scholarships are for business and computer science majors who are full-time students with a 3.0 GPA. For more information contact the Office of Student Financial Assistance at 994-2338.

Etcetera

B.E.S.O. to hold Valentine's Day Fund-Raiser

The Bilingual Education Student Organization's Valentine's Day fund-raiser will result in four persons receiving either a weekend at the Marriott, an alarm system, a window tinting or dinner for two at La Pesca. See a B.E.S.O. member for more information.

TAMU-CC graduate students to make presentations at Texas Aquaculture meeting

Eight graduate students are to make oral presentations or present posters at the Texas Aquaculture Association meeting Feb. 11 and 12 in Houston.

Oral presentations will be made by Chris Stahl and Luis Castro.

Brent Burkott, Horatio Guajardo, Michael Chambers, Jeff Kaiser, Randy Rogers and David Henny will each present posters.

University Bookstore offers biggest class ring sale in two years

The University Bookstore and Artcarved class rings are offering the biggest savings in two years. The sale will start Jan. 31 and end Feb. 3. Savings range from \$175 off 18k, \$85 off 14k and \$40 off 10k. The Artcarved rep will be on hand to help students choose from an extensive array of design options. Artcarved rings carry a full lifetime warranty.

Red Cross offering training for AIDS educators

The Coastal Bend-Texas Chapter of the American Red Cross is offering HIV/AIDS instructor training. The 16-hour course, set for Feb. 18 and 19 from 9 a.m. to 6 p.m. each day, will be taught by Red Cross-certified instructors. The cost of the course is \$60 per student. For more information call 887-9991.

Extension Service presenting horticulture seminars for February

The Texas Agricultural Extension Service is presenting horticultural seminars every Tuesday evening from 7:30 to 8:30 p.m. during the month of February.

On Feb. 1, Nueces County Ex-

ension Agent Kim Fuller will make a presentation on creating wildlife habitats.

On Feb. 8, Extension Specialist Jerry Parsons will cover the "1-2-3's" of basic gardening.

On Feb. 15, Dr. Richard Duple's program will be "Greener Lawns" and cover proper turf management practices.

On Feb. 22, Greg Grant, of Lonestar Nurseries, will discuss "Ornamentals for 1994."

All seminars will be held at the Corpus Christi Garden Center at 5325 Greely St. and are open to the public. Admission is \$1 for each seminar. For more information call 767-5217.

Bayview Hospital offers free mental health workshops

Bayview Hospital is offering a series of free workshops on several mental health topics through March. Call 993-9700 to register. All meetings start at 7 p.m.

February 7 - Learning Disabilities; February 10 - Children and Self-Esteem; February 17 - How to Get Your Way and Still be a Nice Person

Foreign Film Series returns to Art Museum

The Art Museum of South Texas will present the 5th Annual Foreign Film Series beginning Thursday, February 3rd and continuing subsequent Thursdays through March 3rd. Five critical and popular international successes will debut in the Museum auditorium. All films are shown with English subtitles and begin at 7 p.m. Admission per film is \$5 and includes light refreshments. A series pass may be purchased for \$20.

February 3 - **Indochine** (French, 1992, 155 minutes, color). Catherine Deneuve stars in this 1992 Academy Award winning picture. Directed by Regis Wargnier.

February 10 - **Danzon** (Mexican, 1992, 103 minutes, color). Directed by Mexico's leading woman director, Maria Novaro.

February 17 - **Guelwaar** (French and Wolof, 1993, 115 minutes, color). Directed by the Senegalese filmmaker, Ousmane Sembene.

Recreational Sports Roundup

The following programs are open to TAMU-CC students, faculty and staff. Current registration deadlines are listed. For more information, contact the Recreational Sports Office located in Sea Breeze Suite 7, or call 994-2454.

The Field House will remain closed until August 1994.

Team Bowling

Register: February 7 - February 16

Play begins: Fri, Feb. 25th, 3:30 p.m., Saratoga Lanes

Teams of four will compete in a single elimination tournament. There must be at least one male and one female on the team. Teams will compete in either open or recreational class. Lane fees will be paid by the Rec. Sports Office. Individuals must pay for shoe rentals.

Table Tennis Singles

Register: February 7 - February 16

Play begins: Thurs, Feb. 24th, 3-6 p.m., GMSC conf rm #1

Participants will play a single elimination tournament. Divisions: Men's & Women's.

Bowling Singles

Registration: Through Feb 3

Play: Fri, Feb. 4th, 3:30 p.m., Saratoga Lanes

ACU-I Qualifier (See next entry)

ACU-I Tournaments

The Association of College Unions-International (ACU-I) will be sponsoring a regional competition in a variety of activities from

bowling to table tennis. TAMU-CC will send representatives in bowling, table tennis, billiards and darts. The regional will be held Feb. 25-27 in Huntsville, Tx. The Rec Sports Office will hold qualifying tournaments Feb. 7-18. The top finishers who meet eligibility requirements will advance to the ACU-I Regional tournament in various events. Entry fees and lodging for the regional tournament will be paid for by TAMU-CC. For more information contact Brad Bauer (ext. 2455) in the Rec Sports Office, Sea Breeze, Suite 7.

SCUBA Club

The SCUBA club will hold a general meeting on Tues, Feb. 1 at 4:30 in conf. rm #2 of the GMSC. All are welcome.

Basketball Bonanza

Play: Weekly

Individuals will choose the winners of NCAA men's & NBA games weekly. Picks are due every Friday

in the Rec. Sports Office. Highest number of points weekly wins T-shirt. Pick up pick sheets at Rec. Sports Office or Public Information Office.

Noon Walkers

Program dates: Jan. 31 - April 29

Time: Mon. & Wed. 12 - 1 p.m.

Place: Information booth in front of the Center for the Arts

Lunchtime walking group that treks across campus under the leadership of a Rec. Sports staff member. Walks range from 1 - 1.5 miles.

Combat the Fat!

Program dates: Jan. 31 - April 29

This program is designed to assist individuals who are trying to lose weight through eating properly and exercising. The Rec. Sports staff will provide exercise tips to assist individuals with their changing lifestyles. Fitness testing will be provided for anyone who is interested. Monthly newsletters will be sent to each participant.

Calendar

Continuing

Through Feb. 15, "Texas Clay II," contemporary ceramic works exhibition. Weil Gallery.

February 4

Delta Sigma Pi meet the chapter in Conference Room 1 in the Student Center, noon-2 p.m.

February 5

Library Science 530, Collection Development: Classroom East 116, 8 a.m. - 5:30 p.m. For more information contact Wm. Pichette, (409)294-1151 or Mary Hanks, King High School 992-0130 ext. 243

ToastMaster's "Leadership & Management"-Center for the Arts 214, 222, 228, 8:30 a.m. - 1 p.m.

For more information, call 994-5746.

Delta Sigma Pi rush party, begins at 6:30 p.m. at the Southfork Restaurant.

February 7

Faculty Senate Meeting: FC Conference Room, 2 p.m.

February 9

Delta Sigma Pi pledge pinning, 6:30 p.m.-7:30 p.m. in Conference Room 2 of the Student Center.

February 10

Delta Sigma Pi pledge pinning, 4 p.m.-5 p.m. in Conference Room 2 in the Student Center.

February 12

Bilingual Education Student Association Spring Social: 10 a.m. - 12 p.m. For more information contact Linda Arias at 882-8391.

February 15

National Diabetes Day

February 18

Texas Real Estate Commission Sales & Broker Exams: CCH 117, 1-5 p.m. For more information call Nancy Hendricks (512) 465-3980.

'94 COUNTDOWN:

209

days to first class day of four-year status

The Island University News of Texas A&M University-Corpus Christi is published by the Public Information Office (PIO) biweekly during the long semesters and monthly in the summer. News items, classified ads and letters-to-the-editor may be submitted to the PIO in the Administration Building, or mailed to: Island University News, Public Information Office, Texas A&M University-Corpus Christi, 6300 Ocean Dr., Corpus Christi, TX 78412. Deadline for submissions is noon the Tuesday prior to publication.

Letters-to-the-editor must be signed and include author's phone number. Commercial advertising is not accepted.

Publisher	H. Ken DeDominicis, VP for Institutional Advancement
Editor	Mary McQueen, Interim Director of Public Affairs
Production Editor	John Stalmach, Director of Publications
Reporter/Photographer	Charles Steward, Public Affairs Assistant
Production Assistant	Cherry Deyo, Graphic Artist
Photographer	Javier Fonseca, Photographer II
Writer	Rebecca Gonzales
Circulation Manager	Ruth Lara, Secretary II
Circulation Assistants	Martha Anzaldúa
Student Photographer	Irene Ammendiar